



SAFARI SPECIALISTS



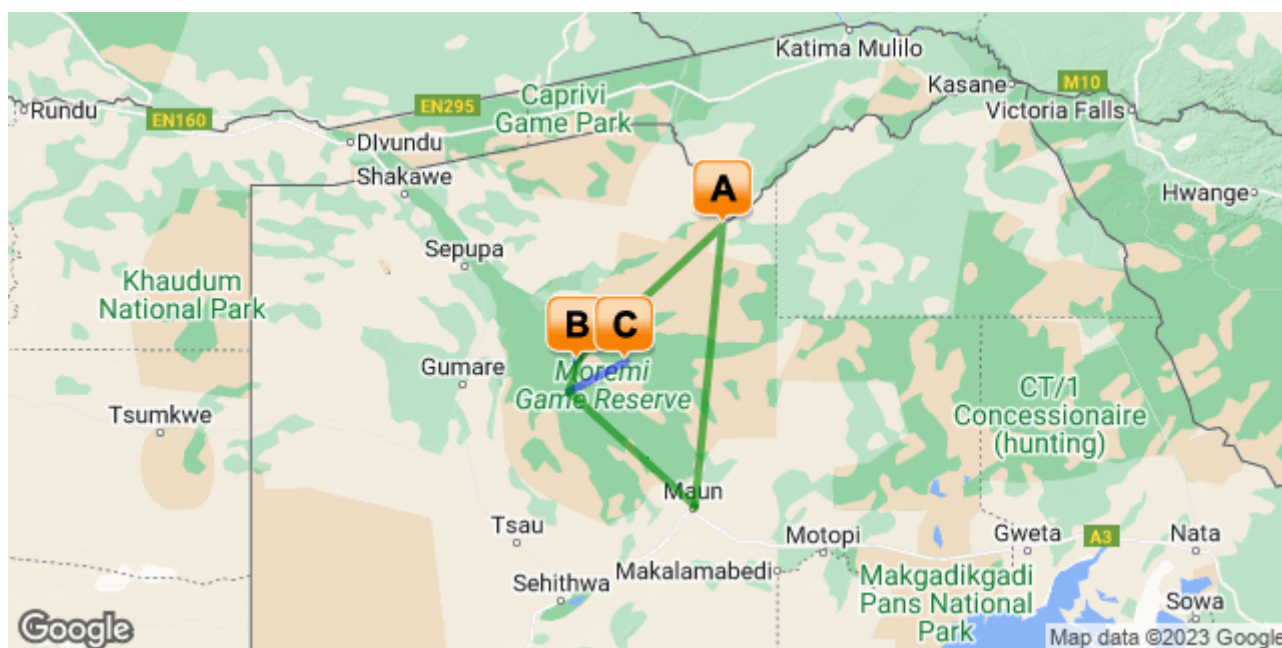
BOTSWANA IS OUR HOME SAFARIS ARE OUR PASSION



9N Wilderness Highlights

Linyanti Concession - Okavango Delta

10 Days / 9 Nights



[Click here to view your Digital Itinerary](#)

Introduction

Start	Accommodation	Destination	Basis	Duration
Day 1	Wilderness DumaTau	Linyanti Concession	FI	3 Nights
Day 4	Wilderness Mombo	Okavango Delta	FI	3 Nights
Day 7	Xigera Safari Lodge	Okavango Delta	FI	3 Nights

Key

FI: Fully Inclusive

Transport

Flight Information

Date	Flight	Departure/Arrival
Day 1	Shared Charter	Maun International Airport [MUB] - Wilderness DumaTau
Day 4	Shared Charter	Wilderness DumaTau - Mombo Airstrip
Day 7	Shared Charter	Mombo Airstrip- Xigera Airstrip
Day 10	Shared Charter	Xigera Airstrip - Maun International Airport [MUB]

9N Wilderness Highlights

PACKAGE SEASON	PP SHARING	SINGLE SUPP
November – 19 December 2023	USD 21,670	USD 6,585
January - March 2024	USD 19,690	USD 0
April & November- 19 December 2024	USD 22,930	USD 2,420
May 2024	USD 26,470	USD 8,100
June - September 2024	USD 38,340	USD 11,300
October 2024	USD 35,070	USD 7,620
20 - 31 December 2024	USD 33,860	USD 10,380

Special notes

- Please note that where a booking crosses over 2 different rate periods e.g. Oct & Nov, neither rate is applicable – please request a special quote
- The above rate is subject to change due to major currency fluctuations, fuel surcharges and increases in national park fees (see below)
- Single supplement* is for accommodation only, applicable when travelling with more than 2 guests and excludes a flying surcharge for guests travelling solo – rate available on request
- Subject to availability at the time of booking

Included



Travel for Impact – Responsible Travel

By booking this itinerary, you donate USD\$2 for every night of travel per person on the booking. Your donation goes to **Travel for Impact (TFI)** and ensures that your safari has a meaningful impact on the people who live locally. For more information on giving back to your chosen destination of travel, visit www.travelforimpact.com



Okavango Air Rescue

Please note that we include a fee into all our packages for a local medivac in case of an emergency. Please discuss further details with your consultant and for more information, visit <http://www.okavangorescue.com/>

Day 1-4

Wilderness Duma Tau, Linyanti Concession

Day Itinerary

Upon arrival into Maun Airport proceed to Customs and Immigration and collect your luggage.

You will be met in the arrival's hall by a representative from Safari Specialists and shown to the Charter Company to assist with check in for your light aircraft transfer flight to the Linyanti area for Duma Tau Camp. You will spend three nights here on a fully inclusive basis.

Please note that the flight is booked on a 'seat rate' basis and therefore flight times are not scheduled until the day prior to flying, lodge managers will arrange your activities and transfers accordingly. Please note that there is a strict luggage restriction on all light aircraft flights of 15kg per person in soft bags, plus hand luggage.



The Linyanti is a safari addict's bush nirvana. One of the most remote and exclusive pockets of Botswana, this pristine wilderness is what great game viewing and wildlife documentaries are made of.

Only private concessions are on offer here, where the rules are flexible and the crowds cannot go. The Linyanti is not just for ticking off the big game; it also has a knack for delivering lesser-spotted bucket list items, whether it is a rare bush pig or that long-searched-for wild dog.

Very few camps operate in the Linyanti. Each offers different habitats and landscapes with one common theme: a strong track record for game viewing during Botswana's drier winter months. Together with the Chobe Riverfront, the Linyanti homes the highest density of African elephants in the world. Many camps also offer seasonally dependent water-based experiences, be it on a spillway, river, lagoon or channel to break up the game drive routine.

Just one of the Linyanti's concessions alone is twenty times the size of Manhattan, yet only forty people can stay during any night of the year. If Botswana puts a heavy emphasis on preserving the wild and taking only a handful of people into the bush, then the Linyanti is where this concept is taken to the extreme.

Here, you can follow the big game off-road, whether in a white-knuckled pursuit of a lioness chasing buffaloes, or during a quiet crawl off-track to see wild dog puppies emerging from their den for the first time.

Possibilities exist for exploring the bush on foot for adrenaline-pumping game approaches, and many camps offer game viewing hides for a more relaxed approach to wildlife sightings, or even overnight sleep outs.

Overnight: Wilderness DumaTau

Includes: meals, selected beverages, activities, concession fees, laundry service

Excludes: premium beverages

Activities: day and night game drives, boating (seasonal and water level dependent) and fishing are seasonal. Guided walking as an optional activity on request

Duma Tau Camp (meaning "roar of the lion") is a tented camp located in the private 125 000-hectare Linyanti Wildlife Reserve which borders the western boundary of Chobe National Park in northern Botswana. Duma Tau is built on raised boardwalks under a shady grove of mangosteen trees, overlooking a large hippo-filled lagoon on the Linyanti waterways.

The seven suite and one family suite camp are spacious, raised off the ground and under thatch with canvas walls, allowing guests to enjoy the night sounds of Africa from the comfort of their rooms. Each tented room has a private en-suite bathroom and outside shower. The main lodge houses a dining room, pub, lounge, plunge pool and a special guest toilet with a fantastic view.

The region has all the habitat diversity to make it a haven for wildlife, and is well known for its elephant concentrations as they congregate along the waterways and lagoons during the dry winter months. Day and night game viewing are conducted in open 4x4 vehicles along the Savuti Channels and the banks of the Linyanti River. It is also possible to enjoy guided walks along the river (on request).

There are many hides in the area where guests can enjoy wildlife viewing close-up and away from a vehicle. One of the best hides is right at the source of the Savuti and many species of game and birdlife can usually be seen. Water activities can be an option when the Linyanti River is in full flood. Additionally, Duma Tau Camp offers a stylish Star Bed sleep out experience (weather permitting) in close proximity to the beautiful Zibadianja Lagoon. A minimum of 3 nights' stay is required for advance bookings of the Star Bed.

Airstrip Transfer Time: 40 minutes

Please note that between April and October the sand gets very thick and the transfer can take a bit longer.



Day 4-7

Wilderness Mombo, Okavango Delta

Day Itinerary

Following breakfast and a possible morning activity (flight time permitting) you will transfer in a light aircraft to the Okavango Delta where you spend three nights at Mombo Camp on a fully inclusive basis.



The Okavango Delta is where the wild things are: an immense, waterlogged oasis alive with elephants and birdlife, adrift in the middle of Kalahari sands. The real magic of the Delta lies in its water, trickling through from far away highlands, and spreading across the channels and floodplains.

During winter in the Kalahari, when the sun has baked the earth bare and turned the desert its driest, water fills the Okavango; transforming the floodplains into a Noah's Ark of African wildlife.

As the water brings life to the delta, its local residents shape and recreate it. Termites slowly build mounds into islands, germinated with palm trees by passing elephants. Waterways open and close on the whim of wide-bottomed hippos, carving out channels where they crash through reeds, and leaving room behind them for exploration by mokoro.

The Okavango has many faces, which change throughout the year, prompted by that most unpredictable diva of all: the weather. Water levels rise and drop, expanding and shrinking islands, while animals move where the life is easiest and the grass greenest. In a few days, a sandy road driven by vehicle can become a waterway of unknowable depth, prompting a safari by boat instead.

Where and when you stay in the Okavango Delta will hugely influence what you do in the bush each day, the animals you're most likely to see and finally, the safari experience you'll have.

The delta's watery heart is best discovered by mokoro through shallow channels and floodplains, as well as crossing the islands on foot. For less water and more of the big game, visit a camp on its drier edges (including Moremi Game Reserve and the Khwai Community Area), jump on a vehicle and seek out the animals hiding in the woodlands.

Overnight: Wilderness Mombo

Includes: meals, selected beverages, activities, park fees, laundry service

Excludes: premium beverages

Activities: day game drives

Mombo Camp is situated on Mombo Island, adjoining the northern tip of Chief's Island, arguably Botswana's prime game viewing area located within the Moremi Game Reserve in the Okavango Delta. The island is surrounded by open floodplains and the camp itself is largely built in and around the shade of some large mangosteen, ebony and fig trees - overlooking a wonderful floodplain teeming with game.

The camp has nine luxuriously furnished tents, raised off the ground. The guests' rooms and connecting walkways are up to two metres off the ground thus allowing game to wander freely through the camp while at the same time ensuring guest safety. The stylish tented rooms are spacious and well-appointed and have en-suite facilities with an additional outdoor shower for those who enjoy a shower under the stars. The dining room, pub and living area overlook the open plain in front of the camp and there is a plunge pool for relaxing in the heat of the day.

Game viewing activities at Mombo are undertaken in open 4x4 vehicles throughout the day, the restrictions of being in the Moremi Game Reserve and fluctuating water levels mean that only game drives are offered from camp.

The Mombo area is renowned for being the most exceptional game viewing area in the Okavango Delta with a high concentration of plains game and predators, including big cats. Lion sightings are particularly good and guests may also see leopard, large herds of buffalo, cheetah, wild dog, elephant, hyena, giraffe, wildebeest and zebra. Black and white rhino have been reintroduced with outstanding success to the area (albeit most are further away from camp), thanks to the Botswana Rhino Reintroduction Program.

Airstrip Transfer Time: 15 minutes



Day 7-10

Xigera Safari Lodge, Okavango Delta

Day Itinerary

Following breakfast and a possible morning activity (flight time permitting) you will transfer in a light aircraft to Xigera Camp, where you spend three nights on a fully inclusive basis.



As previously described

Overnight: Xigera Safari Lodge

Includes: Meals, selected beverages, activities, park fees, laundry service

Excludes: Premium beverages

Activities: Mokoro, guided walking (optional activity on request), boat cruises (water level dependent) and game drives

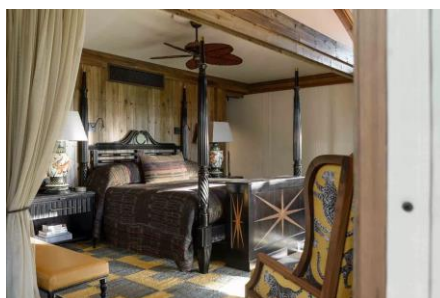
Xigera Safari Lodge dubbed paradise land is situated in the heart of the Okavango Delta within the Moremi Game Reserve. Permanent water in the Xigera Lagoon allows a remarkable variety of activities year-round and the camp's remote location assures a level of privacy and tranquillity rarely found.

The fully rebuilt camp has twelve luxury suites with each suite illustrating an African art and design uniquely celebrating the indigenous traditions and bold interpretations. The camp features special facets that are unique and special to the camp like the baobab tree and a wine cellar with a premium list of the very best wines and Champagnes, as well as a living gallery from award winning artists and designers. Xigera is also on 100% solar power.

Activities at Xigera range from star gazing and touring the living gallery, water activities, guided walks (on request, which requires a special guide), motor boating and mokoro trips, yet also offer game drives. Wildlife sightings may include red lechwe, antelope, lion, hyenas, and leopard and sitatunga antelope. Xigera is a delight for birdwatchers, with Pel's Fishing Owl, African Wattled Crane, Lesser Jacana and a host of eagles, vultures, raptors and kingfishers to be seen.

During periods of low water levels, water activities may be possible but not guaranteed so activities will be focused on game drives.

Airstrip Transfer Time: 5-minute road transfer & 10-minute boat transfer



Day 10

End of Itinerary

Day Itinerary

Following breakfast and a possible morning activity (flight time permitting) you will transfer by light aircraft to Maun Airport in time for own onwards travel arrangements.

You will be met by a representative from Safari Specialists upon arrival into Maun to assist with check in for your outbound flight.

Travel Information

- Please take note of our Booking Terms & Conditions. It will be understood that these have been read and accepted by you on receipt of confirmation of the booking.
- For your safety and peace of mind, on confirmation of your booking, we strongly recommend that Travel Insurance is arranged to cover cancellation, curtailment, emergency evacuation, medical and repatriation expenses, damage/theft/loss of personal luggage, money and goods.
- Road and air transfers and activities are quoted on a seat basis (shared) unless otherwise requested or specified. Passengers may have various stops en-route to a destination. The transfer or charter company reserves the right to specify departure and arrival times. Private charters can be requested at an additional cost.
- Passengers weighing over 100kg should please advise us at the time of booking, as we may need to cost in an additional seat on internal flights for your safety and comfort.
- The costs are subject to change at any time due to fluctuations in fuel costs, taxes, levies, government

regulations, rate of exchange and factors that are imposed upon us by our suppliers that are beyond our control.

- Please advise us of the ages of children (under 18) travelling, together with their date of birth, at the time of booking as not all lodges accept children and there may be restrictions or conditions which can affect pricing.
- We recommend that optional activities be booked in advance at time of confirmation to guarantee availability e.g. Helicopter Flight of the Angels in Victoria Falls
- Please allow a minimum 2-3 hours connection time in Johannesburg for international flights. It is important that you check that your flight tickets have been issued in your full names as per your passport.
- We require full payment for international and domestic scheduled flights at the time of confirmation e.g. Air Botswana Johannesburg to Maun, Proflight Livingstone - Lusaka and so on. We are not able to guarantee any flights before receipt of payment as seats are often held for a limited period before ticketing is required so this is a time sensitive issue. Air tickets are considered non-refundable unless otherwise specified. Please confirm the details with your consultant at the time of booking.

Passports, Visas and Travel Documentation

Your passport must have at least 6 months validity before the expiry date and 6 empty pages (not including the endorsement pages). The onus is upon guests to ensure that passports and visas are valid for the countries visited. Please note that certain visas can take up to 3 months to be processed so please consider this when booking.

If you are travelling with children through Southern Africa please be aware that you will be required to have certified copies of their unabridged birth certificates, and passports on hand. If you are not their legal parents, or if only one of you is travelling – you will need to have consent in the form of an affidavit giving you permission to travel with the child.

Inter-camp transfers

Due to the vast distances involved in travelling in the remote areas of Southern Africa - your itinerary may include road, boat and air transfers in small aircraft.

On shared air transfers, all the flight times between lodges are arranged a few days before the flights take place to avoid endless schedule changes. The lodge or camp where you are staying will be advised of your departure time the day before travel and will ensure that you are at the airstrip on time. Although every effort will be made to ensure that guests are transferred together in one vehicle / aircraft, this cannot be guaranteed, especially with larger groups. The aircraft used for inter-camp transfers vary in size from 3-, 5-, 7- and 12-seater aircraft. We recommend that guests susceptible to motion sickness take appropriate precautions due to flying conditions.

Weight & Luggage Restrictions

There are strict luggage restrictions in place on any itinerary, which includes light aircraft transfers for safety reasons. Luggage, including camera equipment and hand luggage, is restricted to 20 kg per person travelling on seat rates. Only soft bags will be accepted - no hard suitcases or bags with wheels can be transported, as they physically cannot fit into the aircraft.

The maximum dimensions of the soft bags that can be accommodated are as follows: 25cm/10 inches wide x 30cm/11 inches high and 62cm/24 inches long. Please keep in mind that the baggage compartments on the light aircraft are only 25cm high, so the pilots must have the ability to manipulate the bag into the compartment. Note that laundry can be done daily at most camps and lodges.

Should you arrive with excess baggage without prior warning, your baggage could be delayed, as we may have to fly the baggage into camp at a later stage at considerable extra cost to you. However, should you notify us in advance that your baggage will exceed the limit; we may be able to assist you with alternative arrangements e.g., storage or purchase of additional luggage allowance.

For bookings including flights within Zambia & Mozambique, please note luggage weight exceptions under destination information.

Lost Luggage

Lost luggage on international flights is a common problem facing travellers today. We suggest that you pack a small bag with your essentials, including any life sustaining medication, which can be carried with you as hand luggage. If travelling as a couple or family we suggest that you split your clothing between bags so that if one bag gets lost, you will have basic items on hand to see you through the first couple of days while we try and recover your lost baggage.

Please note that whilst we try our utmost to locate and re-unite you with your bags, that there may be charges involved in getting your bags to remote areas, which would be for your cost. Please remember to report the lost luggage to the airline as soon as you make the discovery - the airline will issue you with a Baggage Claim Form, which you will need in order for us to trace the bag.

Health and Dietary

Please note that you are travelling to a Malaria-risk area. Please consult your doctor for medical advice prior to travel.

Although usually safe to drink, we do not recommend that you drink the tap water. Filtered water is available at the camps and lodges.

The camps are isolated and generally have limited power supply and access to supplies. Please notify us in advance of any special dietary requirements, medical conditions and medical equipment you may need with you. Please carry critical medication in your hand luggage.

Yellow Fever Certificates - are only required if you have travelled to a Yellow Fever area as designated by the World Health Organisation. Please check with your Travel Clinic or doctor well in advance of your departure date.

General Travel Information

- There is no or limited electricity and cell phone coverage in the camps and lodges excluding major towns and cities. All camps do make provision for charging cameras and electronic devices.
- Please ensure that you do not pack any valuables, cameras, cash, laptops in your checked in luggage – these should be always kept on your person.
- Please notify us immediately of any changes to flight arrival and departure details as this affects onward transfer arrangements.
- Please note that most camps & lodges in Botswana do not have double beds. Twin beds are pushed together to make up a double room.
- Although every effort is made to adhere to schedules the company reserves the right and in fact is obliged to occasionally change routes and camps on safaris as dictated by changing conditions or unforeseen circumstances.
- By confirmation of the booking, you acknowledge that you have been made aware and accept that the tour carries inherent risks, and that you voluntarily assume all risks which are associated with the tour. You will be required to sign indemnities at the various camps, lodges and service providers, and abide by their operators code of conduct in order to ensure your safety.
- If you have any cause for complaint while travelling, you should immediately bring it to the attention of the camp manager and / or our Maun office that will attempt to resolve the situation immediately.
- Do not remove any animal artefacts, flora or fauna from any of the areas you visit, as there are strict international regulations on the export of such items.

Please refer to the **Safari Information** for further details on preparing for your safari.

**Visa**

Some visitors need to apply for visas before arrival please check with your Embassy.

For more information on visas please visit the following address:

Botswana Government - Visa Requirements

BORDER CROSSINGS**Currency**

The currency of Botswana is the Pula (BWP). US\$ Dollar notes (2007 Series onwards), and Visa and MasterCard are accepted.

Internal Flights and Transfers

Due to the remote areas the camps and lodges are based in, transfers between camps may take place by boat, mokoro, game drive vehicle or light aircraft.

Flight times around Botswana | Approximate flying times

Flight duration times (as listed below), are to be used as an average guideline. They are based on actual flying time, and passengers may have various stops en-route to a destination affecting the total travel time. Your pilot will brief you of your flight route and duration during the safety briefing.

Maun - Delta: 15 to 30 minutes

Delta – Delta: 10 to 20 minutes

Delta - Linyanti: 30 to 40 minutes

Maun – Linyanti: 50 to 60 minutes

Linyanti - Kasane: 40 to 60 minutes

Maun/Delta - Kasane: 60 to 80 minutes

Maun - Makgadikgadi/Desert: 40 to 60 minutes

Departure Taxes

Departure taxes are included in ticket prices.

Weight & Luggage Restrictions

See Booking Information
