



BOTSWANA IS OUR HOME SAFARIS ARE OUR PASSION

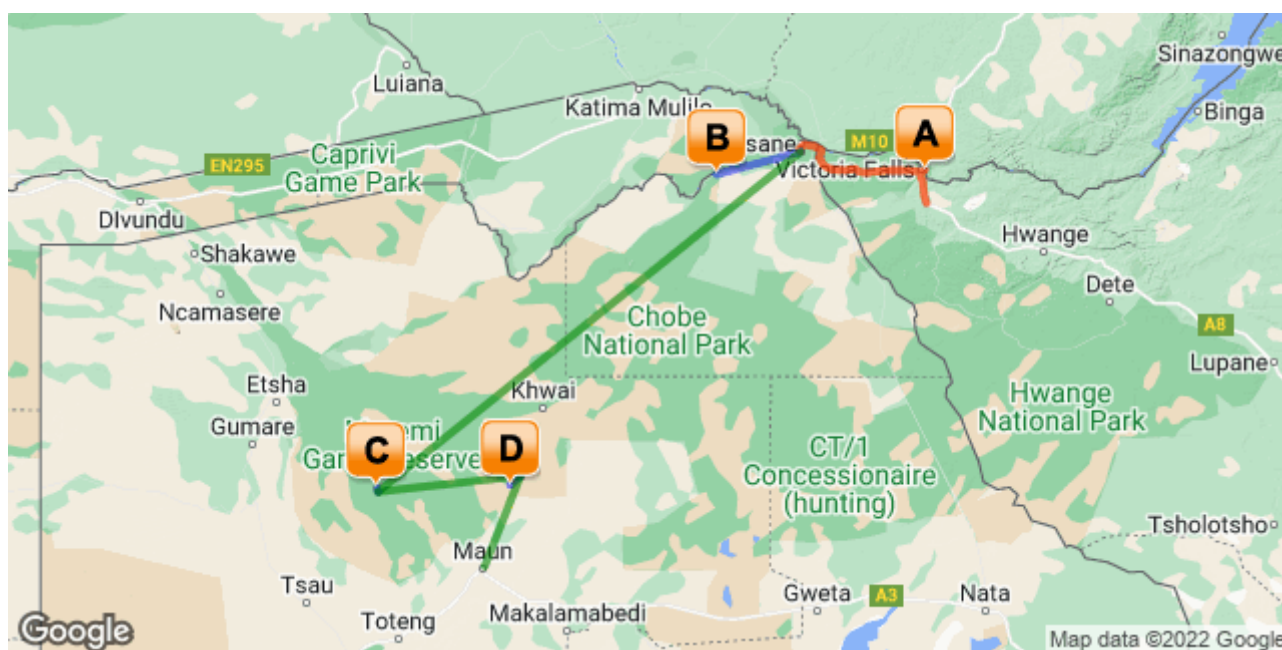


8N Highlights of Botswana

Victoria Falls (Zimbabwe) - Chobe River Front - Okavango Delta

9 Days / 8 Nights

2 Persons



[Click here to view your Digital Itinerary](#)

Introduction

Start	Accommodation	Destination	Basis	Duration
Day 1	Ilala Lodge Hotel	Victoria Falls (Zimbabwe)	B&B	2 Nights
Day 3	Chobe Elephant Camp	Chobe River Front	FI	2 Nights
Day 5	Pom Pom	Okavango Delta	FI	2 Nights
Day 7	Rra Dinare	Okavango Delta	FI	2 Nights

Key

B&B: Bed and Breakfast, FI: Fully Inclusive

Transport

Transfers

Date	Company	Details
Day 1	Wild Horizons	Victoria Falls International Airport [VFA] - Ilala Lodge Hotel
Day 3	Wild Horizons	Ilala Lodge Hotel - Kasane Airport [BBK]
Day 3	Chobe Elephant Camp	Kasane Airport [BBK] - Chobe Elephant Camp
Day 5	Chobe Elephant Camp	Chobe Elephant Camp - Kasane Airport [BBK]

Flight Information

Date	Flight	Details
Day 5	Shared Charter	Kasane Airport [BBK] - Pom Pom Airstrip
Day 7	Shared Charter	Pom Pom Airstrip - Santawani Airstrip
Day 9	Shared Charter	Santawani Airstrip - Maun International Airport [MUB]

8N Highlights of Botswana

	Total	
PACKAGE SEASON	PP SHARING	SINGLE SUPP
1 – 19 December 2022	USD 3,810	USD 160
20 – 31 December 2022	USD 4,160	USD 160
January - March 2023	USD 3,680	USD 170
April – June & 1 – 14 November 2023	USD 5,650	USD 960
July – October 2023	USD 7,040	USD 1,330
15 – 30 November 2023	USD 3,990	USD 170
1 – 19 December 2023	USD 3,860	USD 170

Special notes

- Please note that where a booking crosses over 2 different rate periods e.g. Oct & Nov, neither rate is applicable – please request a special quote
- The above rate is subject to change due to major currency fluctuations, fuel surcharges and increases in national park fees (see below)

- Single supplement* is for accommodation only, applicable when travelling with more than 2 guests and excludes a flying surcharge for guests travelling solo – rate available on request
- Subject to availability at the time of booking
- Please contact your consultant for a tailor-made quote when travelling from 20 December 2023 onwards



Travel for Impact – Responsible Travel

By booking this itinerary, you donate USD\$2 for every night of travel per person on the booking. Your donation goes to **Travel for Impact (TFI)** and ensures that your safari has a meaningful impact on the people who live locally. For more information on giving back to your chosen destination of travel, visit www.travelforimpact.com



Okavango Air Rescue

Please note that we include a fee into all our packages for a local medivac in case of an emergency. Please discuss further details with your consultant and for more information, visit <http://www.okavangorescue.com/>

Day 1-3

Ilala Lodge Hotel, Victoria Falls (Zimbabwe)

Day Itinerary

Upon arrival into Victoria Falls Airport proceed to Customs and Immigration (visa fees to be advised by your Consultant) and collect your luggage.

You will be met in the arrival hall by a representative from Wild Horizons for your road transfer to Ilala Lodge, where you spend two nights in a Standard room on a bed and breakfast basis.



At Victoria Falls, the earth splits open and swallows one of Africa's greatest rivers, the mighty Zambezi, creating the largest sheet of falling water on earth. As the water hits the narrow depths of the Batoka Gorge beneath, it blasts a cloud of mist skywards, lending the falls their local name 'mosi-oa-tunya' (the smoke that thunders). When the Zambezi is its fullest, the mist hangs a permanent raincloud above the falls, showering visitors on even the sunniest of days and visible for miles around.

Above the falls on the upper Zambezi, boats cruise the tranquil water at sunset while the distant spray catches the fading light downstream. Below the falls, the Batoka Gorge's rocky walls funnel the lower Zambezi into a chain of world-class rapids, prime for white water rafting.

Aside from being a UNESCO world heritage site and a natural world wonder, Victoria Falls also forms a natural border between Zimbabwe and Zambia. The falls can be seen from both countries, and for the most part the same activities are offered on both sides, from helicopter scenic flights to village visits and souvenir shopping.

Whether your idea of getting away from it all is a relaxed high tea in colonial grandeur or a heart-stopping bungee jump off a bridge, Victoria Falls keeps both the faint of heart and the most insatiable of adrenalin junkies busy for days.

From Zambia, a side on view of the falls is on offer with views into the Batoka Gorge, as well as the possibility of perching yourself at the edge of the falls on the vertigo-inducing Livingstone Island.

From Zimbabwe, you'll get a full-frontal view of three quarters of the falls' 1.7km wide curtain of water from viewpoints and footpaths meandering through a rainforest kept hot and humid by the spray of the falls.

Overnight: Ilala Lodge Hotel [View iBrochure](#)

Includes: bed & breakfast

Ilala Lodge is situated close to the Victoria Falls, Zimbabwe, shops, markets and nearby restaurants. Wild animals are often seen grazing the hotel lawns as the National Park borders the front of the property.

A variety of room types are offered at Ilala Lodge. The 73 rooms are made up of standard rooms, standard suites, deluxe rooms and executive suites, set out in four different wings of the lodge. All rooms have a private balcony, mini bar fridge, international plugs/ adaptors, wireless internet, in-room safe, tea/coffee self-service, air conditioning, overhead fans and satellite television.

There is an à la carte restaurant which serves breakfast, lunch and dinner and offers a comprehensive wine list and cocktails. Dining outside under the African night sky amidst the sound of the mighty waterfall makes for a very romantic evening. The beautifully decorated lounge and two swimming pool areas invite guests to unwind and take in the tropical gardens.

The hotel also offers an in-house activity booking office for guest's convenience.

Airport Transfer Time: 30 minutes



Day 3-5

Chobe Elephant Camp, Chobe River Front

Day Itinerary

Following breakfast and a morning at leisure you will be met at reception by a Wild Horizons representative for your cross border road transfer into Botswana and Kasane Airport.

Upon arrival at the airport, you will be met for the onwards road transfer to Chobe Elephant Camp where you stay for two nights on a fully inclusive basis.



The Chobe Riverfront is an elephant mecca; home to the largest density of African elephants in the world. Travel here during winter and you'll fast run out of fingers and toes while you count them drinking at the riverbanks and socialising out on the floodplains.

Thanks to its ease of access from Victoria Falls, the Chobe Riverfront is the busiest part of Botswana (though still a much quieter affair than most South or East African safaris). What Chobe lacks in solitude during the busier months, it more than makes up for with quality game viewing.

Chobe will leave you feeling tiny as giant elephant bulls stroll up next to your vehicle or snorkel alongside your boat. It will make you feel lost as hundreds of hippos and buffaloes crowd you out on the floodplains. It will put your heart in your throat as prides of lions stalk antelopes by the water's edge, and it will leave you alone with your thoughts while the classic red sunsets melt over the river to a soundtrack of whistling fish eagles.

Chobe is not just a great introduction to Botswana. It also makes a rewarding repeat journey once you've ticked off the big stuff. It's a place to search for the rare sable antelope, to spot that gem from the birders' bucket list and to explore the remoter corners.

Where you stay in Chobe makes a huge difference to your safari experience. The most affordable options are at bigger hotels in a town setting where you'll share your game drives with a few more vehicles. On the more exclusive end, stay in a wilder area in or around the park, listen to the sounds of the bush at night and get a head start on accessing the park for activities.

Overnight: Chobe Elephant Camp

Includes: meals, local drinks, activities, laundry, park fees and intermittent Wi-Fi.

Excludes: premium drinks

Activities: game drives, boating (seasonal and water level dependent) & village visit

Located high on the edge of a rocky ridge overlooking the famous Chobe River is Chobe Elephant Camp. This uniquely designed lodge has been built to take advantage of the incredible views overlooking the sweeping floodplains while offering a comfortable refuge from the harsh African conditions.

The lodge has been entirely constructed from sandbags, the thick sand-filled walls create a natural insulating barrier between the inhabitants and the harsh African climate and enhance the old farm-style feel of the camp. It houses ten rooms, one family room and can sleep 24 guests at a time.

Activities include viewing the regions spectacular wildlife from open safari vehicles and by boat on the Chobe River as well as a cultural visit. Chobe Elephant Camp's boat jetty is about one hour's drive from camp, close to Ihaha in the heart of the Chobe National Park.

Experience an unforgettable canoeing activity on the Chobe River, it is conducted by experienced guides and brings you closer to nature than a boating experience. All water-based activities are subject to suitable water levels.

Chobe / Ngoma Gate

This property is located near the Ngoma Gate for entry to the Chobe Riverfront. Very few lodges are located on this end of the park and few people utilize this entry point, creating a more remote and exclusive experience than at the properties around Kasane. Although outside the park, this option is located in a bush setting where wildlife frequently passes through.

Airport transfer time: 50 minutes



Day 5-7

Pom Pom, Okavango Delta

Day Itinerary

Following breakfast and a possible morning activity you will road transfer to Kasane Airport where you will be assisted by a porter with check in for your light aircraft transfer to the Okavango Delta.

The following two nights you stay at Pom Pom Camp on a fully inclusive basis.

Please note that the flight is booked on a 'seat rate' basis and therefore flight times are not scheduled until the day prior to flying, lodge managers will arrange your activities and transfers accordingly. Please note that there is a strict luggage restriction on all light aircraft flights of 15kg per person in soft bags, plus hand luggage.



The Okavango Delta is where the wild things are: an immense, waterlogged oasis alive with elephants and birdlife, adrift in the middle of Kalahari sands. The real magic of the Delta lies in its water, trickling through from far away highlands, and spreading across the channels and floodplains.

During winter in the Kalahari, when the sun has baked the earth bare and turned the desert its driest, water fills the Okavango; transforming the floodplains into a Noah's Ark of African wildlife.

As the water brings life to the delta, its local residents shape and recreate it. Termites slowly build mounds into islands, germinated with palm trees by passing elephants. Waterways open and close on the whim of wide-bottomed hippos, carving out channels where they crash through reeds, and leaving room behind them for exploration by mokoro.

The Okavango has many faces, which change throughout the year, prompted by that most unpredictable diva of all: the weather. Water levels rise and drop, expanding and shrinking islands, while animals move where the life is easiest and the grass greenest. In a few days, a sandy road driven by vehicle can become a waterway of unknowable depth, prompting a safari by boat instead.

Where and when you stay in the Okavango Delta will hugely influence what you do in the bush each day, the animals you're most likely to see and finally, the safari experience you'll have.

The delta's watery heart is best discovered by mokoro through shallow channels and floodplains, as well as crossing the islands on foot. For less water and more of the big game, visit a camp on its drier edges (including Moremi Game Reserve and the Khwai Community Area), jump on a vehicle and seek out the animals hiding in the woodlands.

Overnight: Pom Pom [View iBrochure](#)

Includes: meals, local drinks, activities, park fees & laundry

Excludes: premium drinks

Activities: day & night drives, mokoro, guided nature walking (have to be requested in advance) & bird watching. When water levels permit boating is also offered.

Pom Pom is located in the heart of the Okavango Delta in a private concession to the west of the Moremi Game Reserve. The camp is classically designed in the style of safari camps of old camp overlooking the lily strewn Pom Pom Lagoon.

Pom Pom Camp offers nine traditional large Meru-safari-tents with en-suite showers and flush toilets, one of which is a family adjoined tent with shared bathroom. The showers are enclosed, but roofless – for a true bush experience. The camp offers a beautiful dining room, lounge area and bar looking out to the picturesque lagoon. In the evenings you can relax around the open fireplace right at the edge of the lagoon. Pom Pom Camp also has a nicely sized plunge pool to escape the midday heat.

Activities included in this delta paradise are game drives, night drives, walking safaris and mokoro excursions all taken with local expert guides. The tranquillity of the delta and beauty of its winding water ways, open lagoons and tree islands will be a highlight of your safari. Boating is offered when water levels permit.

Hippo and crocodile are found in the deeper lagoons and big predators such as lion and leopard, as well as buffalo, giraffe, zebra and wildebeest move through the area. If you are lucky, some of the nocturnal animals such as serval, civet and genet may be seen on night drives. Birding enthusiasts will enjoy the regular sightings of Pels Fishing Owl, African Fish Eagle, Giant Eagle Owl and White Backed Vultures.

Airstrip Transfer Time:

5 minutes in good conditions. However, the roads can get flooded in the wet season or due to our annual floods. In this case an alternative route will be used and the duration of the transfer will be 15 minutes.



Day 7-9

Rra Dinare, Okavango Delta

Day Itinerary

Following breakfast and a possible morning activity (flight time permitting) you will transfer in a light aircraft to the eastern Okavango Delta where you spend two nights at Rra Dinare Camp on a fully inclusive basis.



As previously described

Overnight: Rra Dinare [View iBrochure](#)

Includes: activities, local drinks, meals, laundry and park fees

Excludes: premium drinks

Activities: game drives; game walks & mokoro excursions (seasonal, depending on water levels and weather conditions)

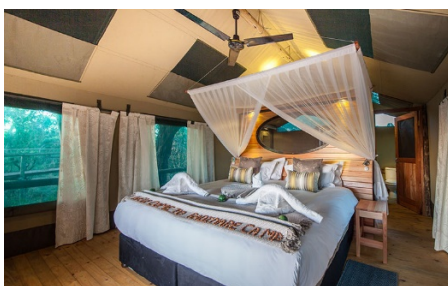
Rra Dinare Camp is situated the NG32 private concession in the southern Okavango Delta bordering Moremi Game Reserve. This exclusive and game-rich area offers a mixed habitat comprising of the Gomoti River and its channels, lush riverine forests, scenic big open flood plains interspersed with clusters of palm-treed islands and Acacia and Mopane woodlands. The camp location and views are spectacular, especially with the classic flooding of the Okavango across the seasonal floodplains.

Rra Dinare Camp is a classic 8-tented camp, offering a family tent with two tented rooms sharing a bathroom. Each spacious fan cooled guest tent is set on a raised wooden deck and features an en-suite open air bathroom to the back and a cosy lounge to the front with a secluded veranda, allowing you to enjoy game viewing from the privacy of your tent.

The spacious main area under cooling thatch, are linked by a series of walkways, connecting the main dining/lounge area through to the open boma deck and separately to the swimming pool deck.

Activities consisting of game drives, with the night game drives (on request) assisted with guide and tracker. In addition, you can explore this side of the delta on seasonal mokoro trips (water levels permitting) as well as game walks with armed guides.

Transfer time: 45 min from Santawani airstrip



Day 9

End of Itinerary

Day Itinerary

Following breakfast and a possible morning activity (flight time permitting) you will light aircraft transfer to Maun Airport in time for own onwards travel arrangements.

You will be met by a representative from Safari Specialists upon arrival into Maun to assist with check in for your outbound flight.

Travel Information

- Please take note of our Booking Terms & Conditions. It will be understood that these have been read and accepted by you on receipt of confirmation of the booking.
- For your safety and peace of mind, on confirmation of your booking, we strongly recommend that Travel Insurance is arranged to cover cancellation, curtailment, emergency evacuation, medical and repatriation expenses, damage/theft/loss of personal luggage, money and goods.
- Road and air transfers and activities are quoted on a seat basis (shared) unless otherwise requested or specified. Passengers may have various stops en-route to a destination. The transfer or charter company reserves the right to specify departure and arrival times. Private charters can be requested at an additional cost.
- Passengers weighing over 100kg should please advise us at the time of booking, as we may need to cost in an additional seat on internal flights for your safety and comfort.
- The costs are subject to change at any time due to fluctuations in fuel costs, taxes, levies, government regulations, rate of exchange and factors that are imposed upon us by our suppliers that are beyond our control.
- Please advise us of the ages of children (under 18) travelling, together with their date of birth, at the time of booking as not all lodges accept children and there may be restrictions or conditions which can affect pricing.
- We recommend that optional activities be booked in advance at time of confirmation to guarantee availability e.g. Helicopter Flight of the Angels in Victoria Falls
- Please allow a minimum 2-3 hours connection time in Johannesburg for international flights. It is important that you check that your flight tickets have been issued in your full names as per your passport.
- We require full payment for international and domestic scheduled flights at the time of confirmation e.g. Air Botswana Johannesburg to Maun, Proflight Livingstone - Lusaka and so on. We are not able to guarantee any flights before receipt of payment as seats are often held for a limited period before ticketing is required so this is a time sensitive issue. Air tickets are considered non-refundable unless otherwise specified. Please confirm the details with your consultant at the time of booking.

Passports, Visas and Travel Documentation

Your passport must have at least 6 months validity before the expiry date and 6 empty pages (not including the endorsement pages). The onus is upon guests to ensure that passports and visas are valid for the

countries visited. Please note that certain visas can take up to 3 months to be processed so please consider this when booking.

If you are travelling with children through Southern Africa, please be aware that you will be required to have certified copies of their unabridged birth certificates, and passports on hand. If you are not their legal parents, or if only one of you is travelling – you will need to have consent in the form of an affidavit giving you permission to travel with the child.

Inter-camp transfers

Due to the vast distances involved in travelling in the remote areas of Southern Africa - your itinerary may include road, boat and air transfers in small aircraft.

On shared air transfers, all the flight times between lodges are arranged a few days before the flights take place to avoid endless schedule changes. The lodge or camp where you are staying will be advised of your departure time the day before travel and will ensure that you are at the airstrip on time. Although every effort will be made to ensure that guests are transferred together in one vehicle / aircraft, this cannot be guaranteed, especially with larger groups. The aircraft used for inter-camp transfers vary in size from 3-, 5-, 7- and 12-seater aircraft. We recommend that guests susceptible to motion sickness take appropriate precautions due to flying conditions.

Weight & Luggage Restrictions

There are strict luggage restrictions in place on any itinerary, which includes light aircraft transfers for safety reasons. Luggage, including camera equipment and hand luggage, is restricted to 20 kg per person travelling on seat rates. Only soft bags will be accepted - no hard suitcases or bags with wheels can be transported, as they physically cannot fit into the aircraft.

The maximum dimensions of the soft bags that can be accommodated are as follows: 25cm/10 inches wide x 30cm/11 inches high and 62cm/24 inches long. Please keep in mind that the baggage compartments on the light aircraft are only 25cm high, so the pilots must have the ability to manipulate the bag into the compartment. Note that laundry can be done on a daily basis at most camps and lodges.

Should you arrive with excess baggage without prior warning, your baggage could be delayed, as we may have to fly the baggage into camp at a later stage at considerable extra cost to you. However, should you notify us in advance that your baggage will exceed the limit; we may be able to assist you with alternative arrangements e.g., storage or purchase of additional luggage allowance.

For bookings including flights within Zambia & Mozambique, please note luggage weight exceptions under destination information.

Lost Luggage

Lost luggage on international flights is a common problem facing travellers today. We suggest that you pack a small bag with your essentials, including any life sustaining medication, which can be carried with you as hand luggage. If travelling as a couple or family we suggest that you split your clothing between bags so that if one bag gets lost, you will have basic items on hand to see you through the first couple of days while we try and recover your lost baggage.

Please note that whilst we try our utmost to locate and re-unite you with your bags, that there may be charges involved in getting your bags to remote areas, which would be for your cost. Please remember to report the lost luggage to the airline as soon as you make the discovery - the airline will issue you with a Baggage Claim Form, which you will need in order for us to trace the bag.

Health and Dietary

Please note that you are travelling to a Malaria-risk area. Please consult your doctor for medical advice prior to travel.

Although usually safe to drink, we do not recommend that you drink the tap water. Filtered water is available at the camps and lodges.

The camps are isolated and generally have limited power supply and access to supplies. Please notify us in advance of any special dietary requirements, medical conditions and medical equipment you may need with you. Please carry critical medication in your hand luggage.

Yellow Fever Certificates - are only required if you have travelled to a Yellow Fever area as designated by the World Health Organisation. Please check with your Travel Clinic or doctor well in advance of your departure date.

General Travel Information

- There is no or limited electricity and cell phone coverage in the camps and lodges excluding major towns and cities. All camps do make provision for charging cameras and electronic devices.
- Please ensure that you do not pack any valuables, cameras, cash, laptops in your checked in luggage – these should be kept on your person at all times.
- Please notify us immediately of any changes to flight arrival and departure details as this affects onward transfer arrangements.
- Please note that most camps & lodges in Botswana do not have double beds. Twin beds are pushed together to make up a double room.
- Although every effort is made to adhere to schedules the company reserves the right and in fact is obliged to occasionally change routes and camps on safaris as dictated by changing conditions or unforeseen circumstances.
- By confirmation of the booking, you acknowledge that you have been made aware and accept that the tour carries inherent risks, and that you voluntarily assume all risks which are associated with the tour. You will be required to sign indemnities at the various camps, lodges and service providers, and abide by their operators code of conduct in order to ensure your safety.
- If you have any cause for complaint while travelling, you should immediately bring it to the attention of the camp manager and / or our Maun office that will attempt to resolve the situation immediately.
- Do not remove any animal artefacts, flora or fauna from any of the areas you visit, as there are strict international regulations on the export of such items.

Please refer to the **Safari Information** for further details on preparing for your safari.



Currency

From June 2019 the Zimbabwean Dollar (Z\$) was reinstated as the official currency of Zimbabwe. However, for tourism purposes, cash in US Dollars is generally the accepted currency. US\$ Dollar notes (2007 Series onwards), and Visa and MasterCard are accepted. Always have enough US\$ cash available in smaller denominations in the event where ATM's and Credit Card facilities are not operational.

Visa

Fees for Visitors to Zimbabwe who are eligible to receive their visa on entry
Europe and USA: US\$ 30.00 for single entry/ US\$ 45.00 for double entry.

UK & Ireland: US\$ 55.00 for single entry/ US\$ 70.00 for double entry.

Canada: US\$ 75.00 for single entry/ double entry to be obtained from local embassy prior to travel

Some visitors need to apply for visas before arrival - please check with your Embassy, Zimbabwe Government Visa Requirements. ALWAYS have cash available in the correct US\$ amount at ALL ports of entry.

Kaza Univisa – Zimbabwe and Zambia

Travellers planning to visit both Zimbabwe and Zambia should apply for a UniVisa (also known as KAZA visa). The visa can be obtained in advance, as well as at ports of entry, but cannot be guaranteed.

The UniVisa allows travellers 30 days travel within both Zambia and Zimbabwe, and is also valid for daytrips to Botswana. Travellers must remain within Zambia & Zimbabwe for the visa to stay valid. Visiting Botswana as a daytrip will not affect the visa's validity, provided travellers return to Zambia or Zimbabwe the same day.

Internal Flights and Transfers

Due to the remote areas the camps and lodges are based in, transfers between camps may take place by boat, train, game drive vehicle or light aircraft.

Road transfers to and from Hwange Safari Lodge/ Hwange Main Camp have scheduled departure times, any transfer outside these times will attract a surcharge.

Departure Taxes

International departure taxes are included in the scheduled flight rates. However light aircraft transfers from Victoria Falls Airport to Livingstone or Kasane require an International Departure tax of US\$35 per person & AIDF Levy of US\$15 = US\$50 per person to be paid in cash.

Domestic departure taxes are payable in cash at the airport, for any flights departing internally from any registered, manned airport. These include Harare, Bulawayo, Kariba, Hwange and Victoria Falls Airport. The amount is US\$10 departure tax + US\$5 AIDF Levy = US\$15 per person. We recommend small denominations for easier and quicker transactions as change is not always available. Traveller's cheques and credit cards are NOT accepted.

Weight & Luggage Restrictions

See Booking Information



Visa

Some visitors need to apply for visas before arrival please check with your Embassy.

For more information on visas please visit the following address:

Botswana Government - Visa Requirements

BORDER CROSSINGS

Currency

The currency of Botswana is the Pula (BWP). US\$ Dollar notes (2007 Series onwards), and Visa and MasterCard are accepted.

Internal Flights and Transfers

Due to the remote areas the camps and lodges are based in, transfers between camps may take place by boat, mokoro, game drive vehicle or light aircraft.

Flight times around Botswana | Approximate flying times

Flight duration times (as listed below), are to be used as an average guideline. They are based on actual flying time, and passengers may have various stops en-route to a destination affecting the total travel time. Your pilot will brief you of your flight route and duration during the safety briefing.

Maun - Delta: 15 to 30 minutes

Delta – Delta: 10 to 20 minutes

Delta - Linyanti: 30 to 40 minutes

Maun – Linyanti: 50 to 60 minutes

Linyanti - Kasane: 40 to 60 minutes

Maun/Delta - Kasane: 60 to 80 minutes

Maun - Makgadikgadi/Desert: 40 to 60 minutes

Departure Taxes

Departure taxes are included in ticket prices.

Weight & Luggage Restrictions

See Booking Information
