



SAFARI SPECIALISTS

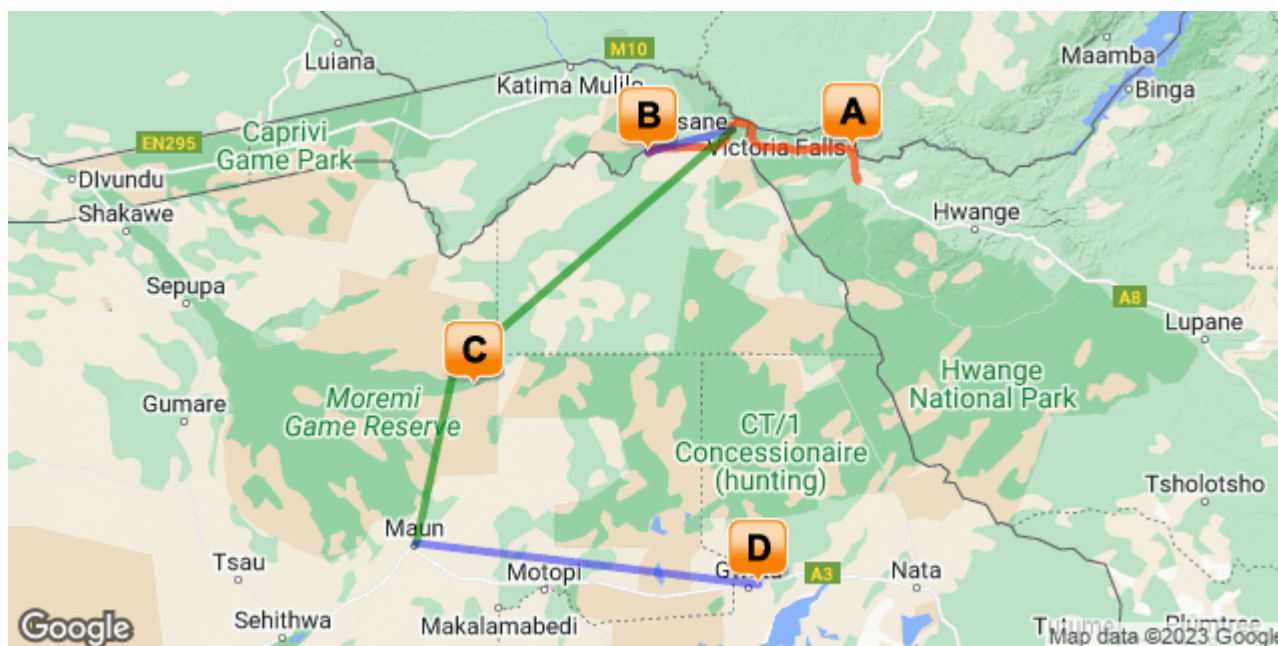


BOTSWANA IS OUR HOME SAFARIS ARE OUR PASSION



10nts Wildlife Encounter

Victoria Falls (Zimbabwe) - Chobe River Front - Khwai Community Area - Gweta
 11 Days / 10 Nights
 Starts Victoria Falls/ Ends Maun



[Click here to view your Digital Itinerary](#)

Introduction

Start	Accommodation	Destination	Basis	Duration
Day 1	Pioneers Victoria Falls	Victoria Falls (Zimbabwe)	B&B	2 Nights
Day 3	Chobe Elephant Camp	Chobe River Front	FI	3 Nights
Day 6	Safari Life En-suite Tented Safari Khwai	Khwai Community Area	FI	3 Nights
Day 9	Planet Baobab - 2N Dry Season Package	Gweta	FB+	2 Nights

Key B&B: Bed and Breakfast. FB+: Full Board Plus - Dinner, Bed, Breakfast and Activities. FI: Fully Inclusive - Bed, All Meals, Fees and Activities

Child Policy

• The minimum age recommended on this safari is 6 years old, all children are always at the responsibility of the parents. Younger children may be accepted – on application.

Additional Notes:

- Activities can be added in Victoria Falls on request (recommended – please discuss with your consultant to tailor activities to your family interests and ages).
- Accommodation in Maun and Victoria Falls can be substituted with alternative accommodation on request
- The location of the private mobile camping trip may be in Moremi, Khwai Community or Mababe depending on availability at the time of booking. Additional nights can be added on request, including up to Savute, provided we reach the minimum of 3 nights camping.
- The season you travel affects the Makgadikgadi experience– please note that the dry season activity – Makgadikgadi Pans visit and sleep out dates are approximately 01 June – 31 October – annual rainfall determines exact dates. Outside of these months there are pans excursions without the sleep out and quad biking, migration game drives and meerkat visits available.
- Please note that where a booking crosses over 2 different rate periods e.g. June & July, neither rate is applicable – please request a special quote
- Subject to availability at time of booking, major currency fluctuations and fuel surcharges

Transport

Flight Information

Date	Flight	Departure/ Arrival Airport
Day 6	Shared Charter	Kasane Airport [BBK]- Khwai Airstrip
Day 9	Shared Charter	Khwai Airstrip- Maun International Airport [MUB]

Transfers

Date	Company	Pick Up/ Drop Off
Day 1	Wild Horizons	Victoria Falls International Airport [VFA]- Pioneers Victoria Falls
Day 3	Wild Horizons	Pioneers Victoria Falls- Kasane Airport [BBK]
Day 3	Chobe Elephant Camp	Kasane Airport [BBK]- Chobe Elephant Camp
Day 6	Chobe Elephant Camp	Chobe Elephant Camp- Kasane Airport [BBK]-
Day 9	Planet Baobab	Maun Airport [MUB]- Planet Baobab
Day 11	Planet Baobab	Planet Baobab- Maun Airport [MUB]-

Special notes

Family Friendly

- The minimum age for this safari is 8 years and all camps offer a discount for children of selected ages when sharing with parents, rates vary with number and age of children.

Individual lodge policies:

- Chobe Elephant Camp minimum age is 2 years and discounted child pricing applies to children aged 2 – 12 years.
- Kindly note minimum age for game drives & boating is 6 years and canoeing 12 years.
- Private mobile camping safari minimum age is 8 years and discounted child pricing applies to children 8 – 11 years, however younger children may be accepted on application.
- Planet Baobab welcomes children of all ages where children up to the age of 5 years are accommodated free of charge, 6 – 18 years discounted child pricing applies.
- Please contact your consultant for a specific quote as younger children might be accepted by booking private vehicle at additional costs.
- Please note that where a booking crosses over 2 different rate periods e.g. Oct & Nov, neither rate is applicable – please request a special quote
- The above rate is subject to change due to major currency fluctuations, fuel surcharges and increases in national park fees (see below)
- Subject to availability at the time of booking

Included



Travel for Impact – Responsible Travel

By booking this itinerary, you donate USD\$2 for every night of travel per person on the booking. Your donation goes to **Travel for Impact (TFI)** and ensures that your safari has a meaningful impact on the people who live locally. For more information on giving back to your chosen destination of travel, visit www.travelforimpact.com



Okavango Air Rescue

Please note that we include a fee into all our packages for a local medivac in case of an emergency. Please discuss further details with your consultant and for more information, visit <http://www.okavangorescue.com/>

Day 1-3

Pioneers Victoria Falls, Victoria Falls (Zimbabwe)

Day Itinerary

Upon arrival in Victoria Falls Airport, you will be met by a representative from Wild Horizons who will assist you with your private road transfer to Pioneers Victoria Falls Lodge. You will spend 2 nights here on a bed and breakfast basis.

We have not included activities, as we prefer to tailor those to individual families taking into account the age of the children and time of year you are visiting. Some ideas to discuss with your consultant are:

- The Canopy Tour – a series of zip lines and climbing across the Batonka Gorge
- Village Tour – which may include a 'Pay it Forward' community contribution or lunch

- Tour of the Falls – guided or explore on your own
- For older children, the sky is the limit with adventure activities, contact us for more ideas!



At Victoria Falls, the earth splits open and swallows one of Africa's greatest rivers, the mighty Zambezi, creating the largest sheet of falling water on earth. As the water hits the narrow depths of the Batoka Gorge beneath, it blasts a cloud of mist skywards, lending the falls their local name 'mosi-oa-tunya' (the smoke that thunders). When the Zambezi is its fullest, the mist hangs a permanent raincloud above the falls, showering visitors on even the sunniest of days and visible for miles around.

Above the falls on the upper Zambezi, boats cruise the tranquil water at sunset while the distant spray catches the fading light downstream. Below the falls, the Batoka Gorge's rocky walls funnel the lower Zambezi into a chain of world-class rapids, prime for white water rafting.

Aside from being a UNESCO world heritage site and a natural world wonder, Victoria Falls also forms a natural border between Zimbabwe and Zambia. The falls can be seen from both countries, and for the most part the same activities are offered on both sides, from helicopter scenic flights to village visits and souvenir shopping.

Whether your idea of getting away from it all is a relaxed high tea in colonial grandeur or a heart-stopping bungee jump off a bridge, Victoria Falls keeps both the faint of heart and the most insatiable of adrenalin junkies busy for days.

From Zambia, a side on view of the falls is on offer with views into the Batoka Gorge, as well as the possibility of perching yourself at the edge of the falls on the vertigo-inducing Livingstone Island.

From Zimbabwe, you will get a full-frontal view of three quarters of the falls' 1.7km wide curtain of water from viewpoints and footpaths meandering through a rainforest kept hot and humid by the spray of the falls.

Overnight: Pioneers Victoria Falls

Includes: bed & breakfast

Pioneers Victoria Falls is situated in the quiet suburbs of Victoria Falls' residential area, 2.5 kilometres from the Falls.

Pioneers offers 50 elegant en-suite rooms all designed to embrace the Zimbabwean Pioneer era, with private verandas overlooking the garden and pool. All rooms at Pioneers are air conditioned and have free limited Wi-Fi. The lodge has four family rooms making it ideal for families. At the heart of the lodge is a snug lounge, an indoor and outdoor dining area, curio shop, as well as a terrace opening onto the pool and garden area.

Activities in Victoria Falls (at an additional cost) can be arranged at the activities desk.

Airport Transfer Time: 20 minutes



Day 3-6

Chobe Elephant Camp, Chobe River Front

Day Itinerary

Following breakfast and a possible morning activity (time permitting) you have a road transfer across the border to Kasane Airport (approximately 2 hours including border formalities). Here you are met and assisted by a Chobe Elephant Camp representative on the further 45 minute road transfer to camp where you spend 2 nights on a fully inclusive basis.



The Chobe Riverfront is an elephant mecca; home to the largest density of African elephants in the world. Travel here during winter and you will fast run out of fingers and toes while you count them drinking at the riverbanks and socialising out on the floodplains.

Thanks to its ease of access from Victoria Falls, the Chobe Riverfront is the busiest part of Botswana (though still a much quieter affair than most South or East African safaris). What Chobe lacks in solitude during the busier months, it more than makes up for with quality game viewing.

Chobe will leave you feeling tiny as giant elephant bulls stroll up next to your vehicle or snorkel alongside your boat. It will make you feel lost as hundreds of hippos and buffaloes crowd you out on the floodplains. It will put your heart in your throat as prides of lion's stalk antelopes by the water's edge, and it will leave you alone with your thoughts while the classic red sunsets melt over the river to a soundtrack of whistling fish eagles.

Chobe is not just a great introduction to Botswana. It also makes a rewarding repeat journey once you've ticked off the big stuff. It's a place to search for the rare sable antelope, to spot that gem from the birders' bucket list and to explore the remoter corners.

Where you stay in Chobe makes a huge difference to your safari experience. The most affordable options are at bigger hotels in a town setting where you will share your game drives with a few more vehicles. On the more exclusive end, stay in a wilder area in or around the park, listen to the sounds of the bush at night and get a head start on accessing the park for activities.

Overnight: Chobe Elephant Camp

Includes: meals, local drinks, activities, laundry, park fees and intermittent Wi-Fi.

Excludes: premium drinks

Activities: game drives, boat cruise & village visit

Located high on the edge of a rocky ridge overlooking the famous Chobe River is Chobe Elephant Camp. This uniquely designed lodge has been built to take advantage of the incredible views overlooking the sweeping floodplains while offering a comfortable refuge from the harsh African conditions.

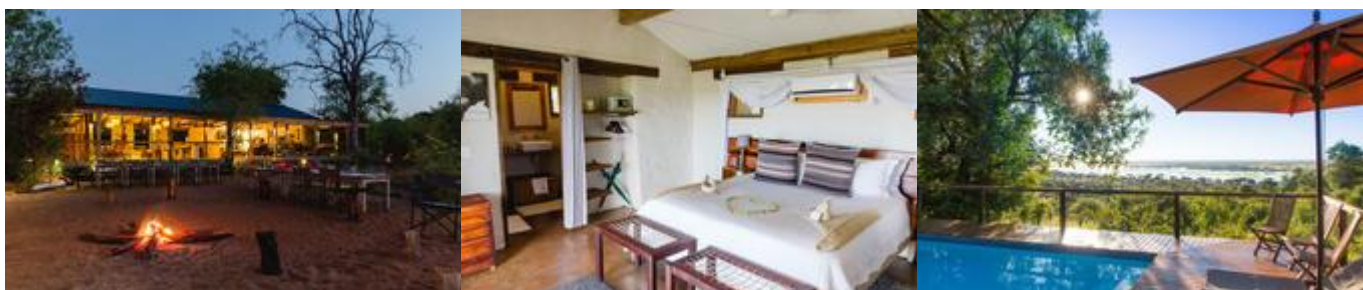
The lodge has been entirely constructed from sandbags, the thick sand-filled walls create a natural insulating barrier between the inhabitants and the harsh African climate and enhance the old farm-style feel of the camp. It houses ten rooms, one family room and can sleep 24 guests at a time.

Activities include viewing the regions spectacular wildlife from open safari vehicles and by boat on the Chobe River as well as a cultural visit. Chobe Elephant Camp's boat jetty is about one hours drive from camp, close to Ihaha in the heart of the Chobe National Park. This jetty is seasonal and usually operational in high water months from May until September, in other months the cruise starts in Kasane.

At an additional charge, guests can experience an unforgettable canoeing activity on the Chobe River, it is conducted by experienced guides and brings them closer to nature than a boating experience. This experience is subject to suitable water levels and needs to be pre-booked.

This property is located near the Ngoma Gate for entry to the Chobe Riverfront. Very few lodges are located on this end of the park and few people utilize this entry point, creating a more remote and exclusive experience than at the properties around Kasane. Although outside the park, this option is located in a bush setting where wildlife frequently passes through.

Airport transfer time: 50 minutes



Day 6-9

Safari Life En-suite Tented Safari Khwai, Khwai Community Area

Day Itinerary

Following breakfast and a possible morning activity (time permitting) you have a road transfer to Kasane Airport where you will be met and assisted by a Mack Air porter for your light aircraft transfer flight to Khwai airstrip. On arrival at the airstrip, you will be met your guide and head to your private campsite for the following 3 nights in the Khwai area.



KHWAI COMMUNITY AREA

Looking at a map of Botswana, you would miss Khwai completely if you didn't know it was there. Wedged between the big-ticket attractions of Chobe National Park to the east and Moremi Game Reserve to the south, Khwai exists as a significant big game destination of its own.

Lying on the eastern fringes of the Okavango Delta with a rich wildlife population and no borders drawn around it on the map, Khwai is often overlooked in favour of its more famous neighbours, though in the winter months it can hold its own for the quality of big game viewing.

During your time here, you'll spend most days exploring the narrow Khwai River, which forms the natural boundary to the Moremi Game Reserve on the south. The Khwai River is a beacon for wildlife and plays host to leopards stalking lechwe in the long grass, lions swimming from the banks to save their cubs' during territorial disputes and crocodiles competing with wild dogs for a midday meal of impala.

As Khwai lies outside the parks, it offers the freedom and flexibility normally only possible with the heavier price tag of a private concession. Go off-road for a closer look at sightings, night drive in search of nocturnal species, and, with a little advance planning, head out on game walks to track wildlife on foot.

Khwai is also home to a village community where people live side by side with the resident wildlife. Some camps will offer village visits for a dose of cultural insight to go with your safari. For those not visiting the water camps of the delta, many camps in Khwai offer the chance to get out on a mokoro (traditional canoe), although excursions are less traditional in nature, skirting the riverbanks, rather than open delta floodplains.

Overnight: Safari Life En-suite Tented Safari Khwai

Includes: All camping equipment, All activities as stated (unless marked optional), All camping and park entrance fees as per the itinerary, Services of a Private Guide and Camp Assistant, Transport in an open Land Cruiser game drive vehicle for optimal game viewing, All meals are prepared for you over an open fire and wine is included with your evening meal, selected drinks (local wine, beer, water, soft drinks), Road transfers between all campsites as per the itinerary (unless other modes of transport such as light aircraft transfers are specified)

Excludes: Other beverages unless otherwise arranged, any optional activities (unless otherwise arranged to be included), International Flights, Any Visa fees, Items of a personal nature (see suggested packing list), personal spending and tips

Wi-Fi: Safari Life runs on a proudly no Wi-Fi policy

Participation: This serviced safari is a nonparticipation safari, where the team will carry out all the necessary camp chores to keep the safari running smoothly. There is one guide with the guests at all times with a camp assistant to set up and break camps, cooking meals, etc

Activities: Game drives in Khwai Community and/or Khwai area of Moremi Game Reserve (campsite location permitting). A pre-booked mokoro activity may be included at additional cost (not permitted for children under 12 years).

In Khwai, if your private mobile camp is based in the Khwai Community Concession (rather than in Moremi Game Reserve) the concession allows for night drives in addition to day drives spent exploring this somewhat drier habitat.

The camp consists of a main area with campfire and mess tent. Accommodations are comfortable 6m x 2.9m x 2.5m Mini Meru Tents, with comfortable linen dressed mattresses and stretchers supplied. Each tent has an en-suite open air bathroom with bucket shower and toilet. Enjoy a piping hot shower while gazing at the beautiful canopy of stars. Breakfast, lunch and dinner are provided, as well as refreshments throughout the day.

Here you can drive into the evening as night driving is permitted in Khwai Community area (not Moremi Game Reserve). Short walks may also be possible, safety permitting – the guide will assess the safety of the area and group given the time of year and conditions and arrange what is suitable.

What to expect on Safari

The appeal of a private safari is that your days are flexible to plan with your private guide in accordance with your preference - following and tracking wildlife movements from the crack of dawn; searching for rare bird species or setting up by a waterhole to wait for the perfect sunset photograph.

A full day in camp usually starts at sunrise around the campfire for that first 'essential' cup of tea or coffee and a light breakfast of cereal, toast, fruit and rusks. You then head out as early as is permitted to be the first on the roads to track fresh spoor left from the animal's overnight activities – you may spot fresh lion tracks walking straight past the camp or evidence of a passing herd of buffalo not far away

Generally, on the morning game drive you stop for tea and head back to camp by late morning. In camp you may enjoy a lunch or brunch, depending on the time, and then there is plenty of time for showers and that great safari tradition 'siesta time'. You meet together for afternoon tea and then head out on the afternoon activity, perhaps seeking a new area or returning to a great morning sighting.



Day 9-11

Planet Baobab - 2N Dry Season Package, Gweta/Makgdadikgadi

Day Itinerary

After breakfast and possible morning activity (flight time permitting) your mobile safari adventure comes to an end. The guide will transfer you to Khwai Airstrip to enjoy a scenic flight out to Maun Airport, approximately 30 minutes. At Maun Airport, you are met by a local representative for a road transfer to Planet Baobab, a drive of approximately 2.5 hours on tar road, the giant aardvark on the side of the road welcomes you to camp.

On arrival please reconfirm your itinerary at reception and note the meeting times for activities and your meal inclusions. The inclusions vary with the seasons, please see below information for details – the dry season is approximately 01 June – 31 October, however rainfall varies annually and late rains may cause it to open later, and similarly the end of the 'dry season' may vary if there is an onset of early (or late) summer rains.



The quirky village of Gweta doesn't offer the traveller a lot as a destination in its own right and is best visited as a jumping off point for the Makgadikgadi Salt Pans further south. For travellers interested in exploring Gweta, there are a few traditionally painted rondavels to be found on the village's sandy back roads and village tours can be organised to see the local school, *kgotla* (traditional court), cattle posts and to sample traditional village fare. The Makgadikgadi Salt Pans are around two hours from Gweta Village by road and the drive requires a 4WD. Due to the lack of signposts and the distance from Gweta, visitors are advised to book a pre-organised excursion out to the salt pans before they arrive.

Overnight: Planet Baobab - 2N Dry Season Package

Includes: dinner, bed & breakfast, 1x lunch, specified activities below

Excludes: drinks, laundry and additional activities

Activities: quad bike and Ntwetwe pan overnight, habitual meerkat visit (all activities are dependent on weather conditions and access to Pans)

Quad bike trips – TWO guests per quad bike only. Children under 12 must be accompanied by an adult.

Situated close to the village of Gweta, (also charmingly known as "The Place of the Bullfrogs"), on the Francistown-Maun Road and sheltered by a grove of gigantic baobabs, Planet Baobab offers a welcoming base from which to explore the Makgadikgadi Pans system.

Planet Baobab combines style with comfort whilst remaining true to its traditional African inspiration. Accommodation styles vary, with Bushman grass huts, palatial Kalanga mud huts (with en-suite bathrooms) traditionally painted with amazing designs and a shady campsite where you can pitch your own tents. Except for the family room, all the huts have two single beds on opposite ends of the room.

Activities include an overnight trip to Ntwetwe Pan with knowledgeable guides. When the pans are dry and weather permits, guests' quadbike to the pans. Here you can discover the geological origins of what was once the world's largest ever super lake and you can follow the Palm Trail created by elephant droppings as these ancient creatures trekked across the arid waste when the super lake dried up.

In addition, you may book optional activities such as a cattle post visit with lunch, baobab bush walks, migration mission day trip. (Optional and at an additional cost)

Ntwetwe Pan and Sua Pan, together with numerous smaller pans, form the Makgadikgadi Pans system. The pans are the remnants of the once great Lake Makgadikgadi: 80,000 square kilometres in extent, and up to 30 metres deep, this was the largest inland sea in Africa. The pans form a spectacular lunar landscape in the dry season and in the wet season, this vast area of salt pans interspersed with low-lying grass islands is the destination of herds of migrating zebra. It has an un-spoilt beauty unlike any other part of Africa.

Please note: All activities are subject to seasonal availability and weather conditions during the month of travel. Pans sleep outs and quad bike activities do not operate in the wet season and may also be halted after unexpected rains, when wet conditions prevent access to the pans. In the case where guests cannot do the sleep out activity, back up lodge accommodation in dome tents are available at the lodge. Some activities will need to be pre-booked before travel. Quad bike trips run with TWO guests per quad bike. Children under 12 must be accompanied by an adult.



Day 11

End of Itinerary

Day Itinerary

Following breakfast and a possible morning activity (time permitting) you have a road transfer to Maun Airport for own onwards flight arrangements. A post night in Maun is recommended to take away the 'rush' of driving back to Maun and connecting same day – please discuss options with your consultant.

Travel Information

- Please take note of our Booking Terms & Conditions. It will be understood that these have been read and accepted by you on receipt of confirmation of the booking.
- For your safety and peace of mind, on confirmation of your booking, we strongly recommend that Travel Insurance is arranged to cover cancellation, curtailment, emergency evacuation, medical and repatriation expenses, damage/theft/loss of personal luggage, money and goods.
- Road and air transfers and activities are quoted on a seat basis (shared) unless otherwise requested or specified. Passengers may have various stops en-route to a destination. The transfer or charter company reserves the right to specify departure and arrival times. Private charters can be requested at an additional cost.
- Passengers weighing over 100kg should please advise us at the time of booking, as we may need to cost in an additional seat on internal flights for your safety and comfort.
- The costs are subject to change at any time due to fluctuations in fuel costs, taxes, levies, government regulations, rate of exchange and factors that are imposed upon us by our suppliers that are beyond our control.
- Please advise us of the ages of children (under 18) travelling, together with their date of birth, at the time of booking as not all lodges accept children and there may be restrictions or conditions which can affect pricing.
- We recommend that optional activities be booked in advance at time of confirmation to guarantee availability e.g. Helicopter Flight of the Angels in Victoria Falls
- Please allow a minimum 2-3 hours connection time in Johannesburg for international flights. It is important that you check that your flight tickets have been issued in your full names as per your passport.
- We require full payment for international and domestic scheduled flights at the time of confirmation e.g., Air Botswana Johannesburg to Maun, Proflight Livingstone - Lusaka and so on. We are not able to

guarantee any flights before receipt of payment as seats are often held for a limited period before ticketing is required so this is a time sensitive issue. Air tickets are considered non-refundable unless otherwise specified. Please confirm the details with your consultant at the time of booking.

Passports, Visas and Travel Documentation

Your passport must have at least 6 months validity before the expiry date and 6 empty pages (not including the endorsement pages). The onus is upon guests to ensure that passports and visas are valid for the countries visited. Please note that certain visas can take up to 3 months to be processed so please consider this when booking.

If you are travelling with children through Southern Africa please be aware that you will be required to have certified copies of their unabridged birth certificates, and passports on hand. If you are not their legal parents, or if only one of you is travelling – you will need to have consent in the form of an affidavit giving you permission to travel with the child.

Inter-camp transfers

Due to the vast distances involved in travelling in the remote areas of Southern Africa - your itinerary may include road, boat and air transfers in small aircraft.

On shared air transfers, all the flight times between lodges are arranged a few days before the flights take place to avoid endless schedule changes. The lodge or camp where you are staying will be advised of your departure time the day before travel and will ensure that you are at the airstrip on time. Although every effort will be made to ensure that guests are transferred together in one vehicle / aircraft, this cannot be guaranteed, especially with larger groups. The aircraft used for inter-camp transfers vary in size from 3-, 5-, 7- and 12-seater aircraft. We recommend that guests susceptible to motion sickness take appropriate precautions due to flying conditions.

Weight & Luggage Restrictions

There are strict luggage restrictions in place on any itinerary, which includes light aircraft transfers for safety reasons. Luggage, including camera equipment and hand luggage, is restricted to 20 kg per person travelling on seat rates. Only soft bags will be accepted - no hard suitcases or bags with wheels can be transported, as they physically cannot fit into the aircraft.

The maximum dimensions of the soft bags that can be accommodated are as follows: 25cm/10 inches wide x 30cm/11 inches high and 62cm/24 inches long. Please keep in mind that the baggage compartments on the light aircraft are only 25cm high, so the pilots must have the ability to manipulate the bag into the compartment. Note that laundry can be done on a daily basis at most camps and lodges.

Should you arrive with excess baggage without prior warning, your baggage could be delayed, as we may have to fly the baggage into camp at a later stage at considerable extra cost to you. However, should you notify us in advance that your baggage will exceed the limit; we may be able to assist you with alternative arrangements e.g. storage or purchase of additional luggage allowance.

For bookings including flights within Zambia & Mozambique, please note luggage weight exceptions under destination information.

Lost Luggage

Lost luggage on international flights is a common problem facing travellers today. We suggest that you pack a small bag with your essentials, including any life sustaining medication, which can be carried with you as hand luggage. If travelling as a couple or family we suggest that you split your clothing between bags so that if one bag gets lost, you will have basic items on hand to see you through the first couple of days while we try and recover your lost baggage.

Please note that whilst we try our utmost to locate and re-unite you with your bags, that there may be charges involved in getting your bags to remote areas, which would be for your cost. Please remember to

report the lost luggage to the airline as soon as you make the discovery - the airline will issue you with a Baggage Claim Form, which you will need in order for us to trace the bag.

Health and Dietary

Please note that you are travelling to a Malaria-risk area. Please consult your doctor for medical advice prior to travel.

Although usually safe to drink, we do not recommend that you drink the tap water. Filtered water is available at the camps and lodges.

The camps are isolated and generally have limited power supply and access to supplies. Please notify us in advance of any special dietary requirements, medical conditions and medical equipment you may need with you. Please carry critical medication in your hand luggage.

Yellow Fever Certificates - are only required if you have travelled to a Yellow Fever area as designated by the World Health Organisation. Please check with your Travel Clinic or doctor well in advance of your departure date.

General Travel Information

- There is no or limited electricity and cell phone coverage in the camps and lodges excluding major towns and cities. All camps do make provision for charging cameras and electronic devices.
- Please ensure that you do not pack any valuables, cameras, cash, laptops in your checked in luggage – these should be kept on your person at all times.
- Please notify us immediately of any changes to flight arrival and departure details as this affects onward transfer arrangements.
- Please note that most camps & lodges in Botswana do not have double beds. Twin beds are pushed together to make up a double room.
- Although every effort is made to adhere to schedules the company reserves the right and in fact is obliged to occasionally change routes and camps on safaris as dictated by changing conditions or unforeseen circumstances.
- By confirmation of the booking, you acknowledge that you have been made aware and accept that the tour carries inherent risks, and that you voluntarily assume all risks which are associated with the tour. You will be required to sign indemnities at the various camps, lodges and service providers, and abide by their operators code of conduct in order to ensure your safety.
- If you have any cause for complaint while travelling, you should immediately bring it to the attention of the camp manager and / or our Maun office that will attempt to resolve the situation immediately.
- Do not remove any animal artefacts, flora or fauna from any of the areas you visit, as there are strict international regulations on the export of such items.

Please refer to the **Safari Information** for further details on preparing for your safari.



Currency

From June 2019 the Zimbabwean Dollar (Z\$) was reinstated as the official currency of Zimbabwe. However, for tourism purposes, cash in US Dollars is generally the accepted currency. US\$ Dollar notes (2007 Series

onwards), and Visa and MasterCard are accepted. Always have enough US\$ cash available in smaller denominations in the event where ATM's and Credit Card facilities are not operational.

Visa

Fees for Visitors to Zimbabwe who are eligible to receive their visa on entry

Europe and USA: US\$ 30.00 for single entry/ US\$ 45.00 for double entry.

UK & Ireland: US\$ 55.00 for single entry/ US\$ 70.00 for double entry.

Canada: US\$ 75.00 for single entry/ double entry to be obtained from local embassy prior to travel

Some visitors need to apply for visas before arrival - please check with your Embassy, Zimbabwe Government Visa Requirements. ALWAYS have cash available in the correct US\$ amount at ALL ports of entry.

Kaza Univisa – Zimbabwe and Zambia

Travellers planning to visit both Zimbabwe and Zambia should apply for a UniVisa (also known as KAZA visa). The visa can be obtained in advance, as well as at ports of entry, but cannot be guaranteed.

The UniVisa allows travellers 30 days travel within both Zambia and Zimbabwe, and is also valid for daytrips to Botswana. Travellers must remain within Zambia & Zimbabwe for the visa to stay valid. Visiting Botswana as a daytrip will not affect the visa's validity, provided travellers return to Zambia or Zimbabwe the same day.

Internal Flights and Transfers

Due to the remote areas the camps and lodges are based in, transfers between camps may take place by boat, train, game drive vehicle or light aircraft.

Road transfers to and from Hwange Safari Lodge/ Hwange Main Camp have scheduled departure times, any transfer outside these times will attract a surcharge.

Departure Taxes

International departure taxes are included in the scheduled flight rates. However light aircraft transfers from Victoria Falls Airport to Livingstone or Kasane require an International Departure tax of US\$35 per person & AIDF Levy of US\$15 = US\$50 per person to be paid in cash.

Domestic departure taxes are payable in cash at the airport, for any flights departing internally from any registered, manned airport. These include Harare, Bulawayo, Kariba, Hwange and Victoria Falls Airport. The amount is US\$10 departure tax + US\$5 AIDF Levy = US\$15 per person. We recommend small denominations for easier and quicker transactions as change is not always available. Traveller's cheques and credit cards are NOT accepted.

Weight & Luggage Restrictions

See Booking Information



Visa

Some visitors need to apply for visas before arrival please check with your Embassy.

For more information on visas please visit the following address:

Botswana Government - Visa Requirements

BORDER CROSSINGS**Currency**

The currency of Botswana is the Pula (BWP). US\$ Dollar notes (2007 Series onwards), and Visa and MasterCard are accepted.

Internal Flights and Transfers

Due to the remote areas the camps and lodges are based in, transfers between camps may take place by boat, mokoro, game drive vehicle or light aircraft.

Flight times around Botswana | Approximate flying times

Flight duration times (as listed below), are to be used as an average guideline. They are based on actual flying time, and passengers may have various stops en-route to a destination affecting the total travel time. Your pilot will brief you of your flight route and duration during the safety briefing.

Maun - Delta: 15 to 30 minutes

Delta – Delta: 10 to 20 minutes

Delta - Linyanti: 30 to 40 minutes

Maun – Linyanti: 50 to 60 minutes

Linyanti - Kasane: 40 to 60 minutes

Maun/Delta - Kasane: 60 to 80 minutes

Maun - Makgadikgadi/Desert: 40 to 60 minutes

Departure Taxes

Departure taxes are included in ticket prices.

Weight & Luggage Restrictions

See Booking Information
