

# Delta & Chobe Princess Standard

8 nights / 9 days

Starts in Livingstone, Zambia/ Ends Maun, Botswana



**From US \$ 3620 per person**

P/Bag 0178, Maun, Botswana

Tel: +267 72311321 Email: [info@safarispecialists.net](mailto:info@safarispecialists.net)

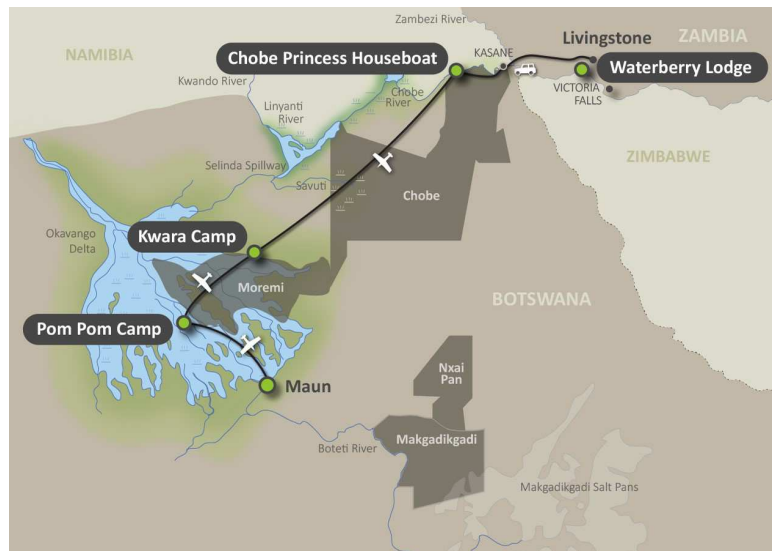


Day	Location	Accommodation	Transfers / Activities	Meals
1	Livingstone, Victoria Falls Zambian side	<b>Waterberry Zambezi Lodge,</b> Thatched cottage	Arrive Livingstone eta TBA, road transfer to Waterberry Lodge for afternoon in house activity (time permitting)	L, time permitting, D & SB
2	Livingstone, Victoria Falls Zambian side	<b>Waterberry Zambezi Lodge</b>	Choice of 2 'in house activities' – see below table for inclusions. Any other activities are optional extras	B, L, D & SB
3	Chobe River, Chobe National Park	<b>Chobe Princess</b> Houseboat Cabin	After breakfast, transfer by road/boat to Botswana, through to Kasane Immigration. Continue by boat via Namibian Immigration to the Chobe Princess houseboat. Settle in and afternoon activity	B, L, D & SB
4	Chobe River	<b>Chobe Princess</b>	Morning and afternoon activity from a choice of: guided game viewing by tender boat, guided fishing with fully equipped boat, and guided walks on Impalila Island	B, L, D & SB
5	Okavango Delta, Kwara concession	<b>Kwara Camp,</b> En-suite tents	Transfer via Kasane Immigration/town to Kasane Airport for the light aircraft flight to Kwara Camp, afternoon activity	B, L, D & SB
6	Okavango Delta, Kwara concession	<b>Kwara Camp</b>	Morning and afternoon activities from a choice of: day/night game drives, mokoro excursions, guided walks and motor-boating	B, L, D & SB
7	Okavango Delta, Pom Pom Concession	<b>Pom Pom Camp,</b> En-suite tents	Morning activity (time permitting), light aircraft flight to Pom Pom for afternoon activity	B, L, D & SB
8	Okavango Delta, Pom Pom Concession	<b>Pom Pom Camp</b>	Morning and afternoon activities from a choice of: day/night game drives, guided walks, mokoro excursions and motor-boating	B, L, D & SB
9	Safari Ends Maun	<b>END OF ARRANGEMENTS</b>	Morning activity (flight time permitting) and light aircraft transfer to Maun for onward travel arrangements.	B

B=breakfast / L=lunch / D=dinner / SB=selected beverages

## Highlights

- Victoria Falls, Zambian side
- Houseboat on the Chobe River
- Guided game viewing by tender boat in Chobe River
- Guided fishing in the Chobe River
- Guided walks in Impalila Islands
- Day and night game drives in Okavango Delta private concessions
- Boating on the Okavango Delta
- Mokoro excursions and walking in the Okavango



## Cost of the safari 2015/2016

Season	Cost per person sharing	Single supplement*	Average nightly rate per person
01 – 14 Nov 2015	US \$ 4290 per person	US \$ 1200	US \$ 537 per person per night
15 – 30 Nov 2015	US \$ 3780 per person	US \$ 360	US \$ 473 per person per night
01- 31 Dec 2015	US \$ 3620 per person	US \$ 320	US \$ 453 per person per night
01 Jan – 31 Mar 2016	US \$ 3620 per person	US \$ 320	US \$ 453 per person per night
01 Apr – 30 Jun 2016	US \$ 4520 per person	US \$ 1250	US \$ 565 per person per night
01 Jul – 31 Oct 2016	US \$ 5470 per person	US \$ 1510	US \$ 684 per person per night
01 – 30 Nov 2016	US \$ 4520 per person	US \$ 1250	US \$ 565 per person per night
15 Nov – 31 Dec 2016	US \$ 4110 per person	US \$ 410	US \$ 514 per person per night

## Please Note:

- Please note that where a booking crosses over 2 different rate periods e.g. Oct & Nov, neither rate is applicable – please request a special quote
- The above rate is subject to change due to major currency fluctuations, fuel surcharges and increases in National park fees – EXPECTED TO INCREASE IN 2016/2017
- Subject to availability at the time of booking
- Single supplement is for accommodation only, applicable when travelling with more than 2 guests and excludes a flying surcharge for guests travelling solo – rate available on request
- It is possible to change the itinerary in Victoria Falls/Zimbabwe – please contact us for options
- **Christmas surcharge** of US \$ 90 per person per night at Kwara Camp for any nights applicable (between 20 Dec 2015 – 04 Jan 2016 and 20 Dec 2016 – 04 Jan 2017)



### Travel for Impact – Responsible Travel

By booking this itinerary, you donate USD\$2 for every night of travel per person on the booking. Your donation goes to **Travel for Impact (TFI)** and ensures that your safari has a meaningful impact on the people who live locally. For more information on giving back to your chosen destination of travel, visit [www.travelforimpact.com](http://www.travelforimpact.com)

### Botswana Park Fees and Departure Taxes - Increase

Please be aware that the Botswana Park Fees and Airport Departure taxes may increase in 2016/2017. Regrettably such increases are beyond our control and are excluded from any bookings, provisional or confirmed. We will inform you should any increase be advised.

Inclusions	Exclusions
<ul style="list-style-type: none"> <li>• 2 nights <b>Waterberry Zambezi Lodge</b>, Livingstone/Zambia including meals, selected beverages, 2 in house activities from a selection of - Tour of the Falls, sunset cruise, daytime cruise, fishing, island picnic, guided birding, guided village walks, guided tour of town &amp; village walk, 1 day entrance fee to Victoria Falls, Zambian side</li> <li>• 2 nights <b>Chobe Princess Houseboat</b>, Chobe River/Chobe National Park including meals, selected beverages, laundry service, activities/ guided game viewing by tender boat, guided fishing with fully equipped boat and guided walks in the Impalila Island</li> <li>• 2 nights <b>Kwara Camp</b>, private Kwara Concession, Okavango Delta, including meals, selected beverages, laundry service, activities and concession fees – day and night game drives, motorboating, mokoro excursions and guided walks</li> <li>• 2 nights <b>Pom Pom Camp</b>, private Pom Pom Concession, Okavango Delta including meals, selected beverages, laundry service, activities and concession fees – day and night game drives, motorboating, mokoro excursions and guided walks</li> <li>• Road transfer Livingstone Airport – Waterberry Lodge – across the border into Botswana and via Kasane Airport to Chobe Princess House Boat (includes a short boat trip across the Chobe River into Namibia)- Kasane Airport</li> <li>• Light aircraft transfers Kasane – Kwara – Pom Pom – Maun</li> </ul>	<ul style="list-style-type: none"> <li>• Increases in National Park fees for 2016 – package calculated on P70 per person per day entry fee in Chobe National Park</li> <li>• Additional activities and transfers in Livingstone</li> <li>• Additional activities and transfers in whilst staying at Chobe Princess</li> <li>• All extras such as telephone calls/curio shopping/postage and personal spending</li> <li>• Premium imported wines, champagnes, spirits &amp; liqueurs where drinks are included</li> <li>• International flights &amp; taxes</li> <li>• All Travel Insurances</li> <li>• Visa if required for travel in Botswana and Zambia</li> <li>• Vaccinations</li> <li>• Errors and omissions</li> </ul>

## DETAILED ITINERARY:

**Days 1 - 2: WATERBERRY LODGE, Livingstone/Zambia**  
(fully inclusive and selected activities)

**Travel time: Livingstone Airport – Waterberry**  
Approximately 40 minutes road transfer

On arrival at Livingstone Airport, proceed through customs and immigration and you are met in the entrance hall by a local representative and escorted to the lodge. You are booked on a fully inclusive basis including all meals, selected beverages and two in-house activities, further activities or transfers are optional for your own account.

Waterberry Lodge is situated on the banks of the Zambezi River about 22 km from Livingstone towards Kazungula, giving you easy access to Kasane and the Chobe National Park as well as Livingstone town and the Victoria Falls. The small, friendly and informal lodge has an idyllic setting, amidst mopane woodland on the edge of the Zambezi, with a wonderful view to the game park on the opposite bank.



The comfortable chalets are set around sweeping lawns - some on the riverbank, some overlooking a private dam. Several of the rooms have their own decks for sunbathing, bird watching, private dinners or just relaxing. The double, twin or family bedrooms are open to the high thatch, with comfortable beds, en suite bathrooms, mosquito nets and fan.

The main double-storey lodge area overlooks the Zambezi River and the game park beyond. Upstairs the main lounge is open to the high thatch with plenty of seating, a well-stocked bar and magnificent views. Meals are served in the dining area or alfresco, on the sun terrace, overlooking the river.

A floating pontoon gently sways on the Zambezi River, making it the perfect location for sundowners, fishing or just relaxing and enjoying the view. A welcoming swimming pool is set in the centre of the landscaped

## Safari Specialists – Delta and Chobe Princess – Standard - 8 nights

gardens and has a small plunge pool as well as shallow end, making it safe for children.

The in house activities are: Tour of Falls, sunset cruise, daytime cruise, fishing, island picnics, guided birding, guided village walk, guided tour of the town and local markets – depending on the rate basis these are included or excluded, check your itinerary for details. All other activities offered in Livingstone can be pre booked or booked at the lodge.

Further activities are optional/for your own expense and can be arranged by the lodge or booked in advance including sunset cruises, helicopter flights, canoeing, white water rafting and fishing.

### AREA DESCRIPTION – LIVINGSTONE

Livingstone is a historic colonial town most famous for its proximity to the Victoria Falls. The town has experienced a revival in the last decade with the old colonial style buildings which line the shaded main avenue, being renovated and now housing shops, cafes and a variety of local businesses. Livingstone offers a wide range of activities from the challenge of white water rafting and bungi jumping, to the awe-inspiring elephant back safaris and sunset cruises. Livingstone has something for everyone.

The Victoria Falls are one of the Seven Wonders of the World and is the largest sheet of falling water on earth - a spellbinding and mesmerizing spectacle. The sheer mass of water cascading down the 100m drop across nearly 2km makes a thunderous roar and creates a magnificent spray of water that can be seen for miles - hence the local name 'mosi oa tunya' meaning 'the smoke that thunders'. Water flow over the falls varies throughout the year. The river's annual flood season is February to May when the spray can reach a height of over 400m, this is spectacular from above but it makes it very difficult to see the falls at ground level as it is under a heavy shower/mist. Water levels start dropping in August and are at their lowest October - December when much of the rocky face becomes dry. At times of low water, the falls are best viewed from the Zimbabwe side or from Livingstone Island.

Days 3 - 4: **CHobe PRINCESS HOUSEBOAT, adjacent to Chobe National Park (Fully Inclusive)**

Travel time: **Waterberry – Chobe Princess**  
Approx 3 hours boat/ road transfer

After breakfast you will transfer by road to the Kazungula border post, cross the Zambezi by boat and proceed through Zambian customs before you are escorted through Botswana customs for onwards road transfer to Kasane town before 13h00, where you are met by a representative from Chobe Princess for onwards road/boat transfer. You spend 2 nights at Chobe Princess House Boat on a fully inclusive basis.

The Chobe Princesses are berthed on the Chobe River near to the entrance to the Chobe National Park. From the houseboats you can view wildlife in their natural habitat, experience amazing sunrises and sunsets from the decks, fish the Zambezi in tender boats, as well as being offered the opportunity of visiting one of the 7 wonders of the world. This is the perfect luxury escape.



The three Chobe Princesses each offer four luxury en-suite double cabins, decorated in tasteful, modern colours and equipped with ample cupboard space and power outlets for all devices. The cabin windows slide open onto a beautiful open view of the water, and guests are protected from mosquitoes by window screens.

Guests have the opportunity to soak up the African sun on the sun deck and are able to spot wildlife whilst enjoying dinner or brunch on board. The vessels boast fully furnished entertainment areas and plunge pool, perfect for relaxation in the midday sun. Guests can relax at the bar whilst watching the African sunset.

Activities involve game viewing (both from the main boat and the smaller tender boats) and guided fishing trips. Fully qualified guides are available to take guests on walks on Impalila Island. The Chobe area is teeming with animals that come down to drink from the river. Guests may see elephant, hippo, crocodile, buffalo, giraffe and numerous antelope from the houseboat.

## Safari Specialists – Delta and Chobe Princess – Standard - 8 nights

### Special notes:

The earliest collection time from Kasane Immigration is 13h00, (check in time is 14h00). Guests arriving earlier should expect to wait at a hotel near Kasane Immigration after their transfer from the airport until 13h00. Please note that immigration closes at 16:30.

Check out time on all the boats is strictly 09h30 and guests will be back at Kasane Immigration (Chobe River) at 10h00. Guests can expect to wait at a hotel near Kasane Immigration until pick up time for their departure flight.

All Kasane hotels where guests may be dropped before/after their stay on the houseboat have bar and restaurant facilities. Any meals/drinks will need to be settled by the guest directly at their own expense.

### AREA DESCRIPTION – CHOBE

The Chobe River Front is a remarkable wildlife area due to the permanent water source of the Chobe River. However its accessibility from Kasane and neighbouring towns of Victoria Falls and Livingstone has created quite a busy tourist area with larger hotels and lodges than you find in the more remote Okavango Delta. The spectacle of all the animals coming to drink and frolic at the water's edge is one to behold, particularly in the dry season (May - Oct) where water is scarce away from the river. It is an area famous for its abundance of elephants, a variety of predators and, in addition, you are likely to see herds of buffalo and possibly even roan and sable antelope. In the rainy season (Nov - Apr) the game is much less concentrated at the river as the wildlife spread throughout the greater area of Chobe National Park due to availability of surface water from nearby pans. This assists the vegetation on the river banks in recovering from the massive herds that are attracted to the area in the dry months. The summer rains bring beautiful wild flowers, exquisite scenery, impressive bird life and an abundance of young animals usually born around November/December. The spectacular Chobe sunsets alone are worth a visit to the area. Please note that activities are restricted within the national park in accordance with government rules and regulations: these include no driving off-road, no walking and no driving after dark

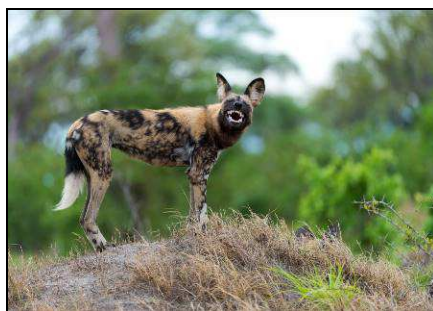
Days 5 - 6: Kwara Camp, private Kwara Concession in Okavango Delta (fully inclusive)

Travel time: Chobe Princess – Kwara Camp  
Approximately 30 minutes by boat, 15 minute road transfer and a 90 minute light aircraft transfer

Today you leave the houseboat and make your way back to Kasane immigration by boat from which you are collected and taken to Kasane Airport for the light aircraft flight down to the Okavango Delta. You will spend 2 nights in the Kwara Concession, just north of Moremi Game Reserve (flight schedules are advised the day prior to travel and meals arranged accordingly).

*Please note that the flight is booked on a 'seat rate' basis and therefore flight times are not scheduled until the day prior to flying, the lodge management will arrange your activities and transfers accordingly. Please note that there is a strict luggage restriction on all light aircraft flights of 15kg per person in soft bags, plus hand luggage. There may be stops en-route to your final destination.*

Kwara Camp is situated on private concession on the edge of the permanent waters of the world renowned Okavango Delta in Botswana, and shares a common boundary with Moremi Game Reserve. The area offers a combination of permanent water, seasonal flood plains and pans, open grasslands as well as extensive dry bush and scrub which creates a great game viewing destination throughout the year.



The eight traditional safari-style tents are built on raised decks, within a grove of huge and ancient African Ebony trees. Each tent has an en-suite bathroom with an indoor/outdoor shower and a private deck with views across the floodplain. There is a lounge, bar and dining area in the central lodge as well as a plunge pool and gift shop. Evenings can be enjoyed around the boma area.

Kwara is renowned for being a camp that offers a year round delta experience on a diverse range of activities including mokoro trips, guided walks with armed guides and motor boating trips through the waterways. In addition day and night game drives are taken to explore the area which offers spectacular

## Safari Specialists – Delta and Chobe Princess – Standard - 8 nights

scenery with scattered herds of plains game and ever-attendant predators. All game drives are taken with a guide and tracker, providing an extra pair of eyes.

The vehicles are now all updated to Toyota Land cruisers with 3 rows of 3 seats at Kwara Camp. Please note they do not have an overhead canopy. Kwando Safaris believe this is to their client's advantage for optimal photographic and game viewing opportunities. This may not be suitable for some clients due to exposure to the elements.

### AREA DESCRIPTION - OKAVANGO DELTA

The Okavango Delta is one of the world's largest inland deltas situated in the middle of the largest stretch of continuous sand in the world - the Kalahari basin. This oasis in the middle of the desert is a rich yet fragile ecosystem, providing a life source for an incredible variety of wildlife. A wealth of species have adapted to the contrasting conditions created by living in the harsh Kalahari desert which is transformed annually with the arrival of the delta flood waters originating in Angola.

The Okavango wetland encompasses Moremi Game Reserve and surrounding regions divided into areas known as Private Concessions. These concessions are wildlife management areas, carefully administered to balance the growing community's development and conservation, whilst empowering citizens through sustainable tourism. Many of the exclusive lodges in Botswana are situated within these concessions in the delta, providing an unparalleled wildlife experience - exclusive and remote, avoiding mass tourism and exploitation.

Flood levels fluctuate dramatically throughout the year, with high water levels peaking in the central Okavango during the dry winter months and water levels at their lowest during the later summer months, contrary to the seasonal rainfall. The landscape, activities and game viewing vary considerably throughout the delta depending on your location, the season and flood levels. Some areas have larger tracts of permanent dry land which generally means there is more focus on land based activities (game drives) and big game viewing. Lodges situated on islands deep in the delta concentrate more on water activities such as mokoro excursions, walking, boating, fishing and bird watching. Those lodges situated on the outer fringes of the delta, referred to as the 'seasonal' delta, offer varied experiences at different times of the year - more water based during high flood levels and more land based as the flood recedes.

Game is more concentrated around the permanent water during the dry season (Apr - Oct) with it becoming very hot in the later months. The heronries become active as the migrant birds return to Botswana from September through November, and general bird watching is excellent throughout the summer months. The rainy season (Nov - Apr) invigorates the lush scenery with wild flowers, dramatic thundershowers, spectacular sunsets and the birthing season brings great predator and prey interaction.

Days 7-8: Pom Pom Camp, private concession in south western Okavango Delta (fully inclusive)

Travel time: Kwara Camp – Pom Pom Camp  
Approximately 20 minute light aircraft transfer

After breakfast and a morning activity (time permitting) you transfer by light aircraft across the delta to Pom Pom Camp, a flight of approximately 20 minutes.

Pom Pom is located in the south western Okavango Delta in a private concession to the west of the Moremi Game Reserve. The camp is designed in the style of vintage style canvas tents overlooking the lily strewn Pom Pom Lagoon.



Accommodation at Pom Pom Camp is in nine spacious vintage safari style tents complete with separate lounge, private verandah and with en suite bathrooms. One of the tents is a family unit with two adjoining tents sharing a bathroom. Each tent is set on elevated wooden decks and the 'outdoor' showers are enclosed, but roofless – for a true bush experience.

The camp offers a spacious main area incorporating a dining room, lounge area and bar looking out to the picturesque lagoon. In the evenings you can relax around the open fireplace right at the edge of the lagoon. Pom Pom Camp also has a nicely sized plunge pool for guests to enjoy the midday heat.

## Safari Specialists – Delta and Chobe Princess – Standard - 8 nights

Activities included in this delta paradise are game drives, night drives, walking safaris and mokoro excursions all taken with local expert guides. The tranquility of the delta and beauty of its winding water ways, open lagoons and tree islands will be a highlight of your safari. Hippo and crocodile are found in the deeper lagoons and big predators such as lion and leopard, as well as buffalo, giraffe, zebra and wildebeest move through the area. If you are lucky, some of the nocturnal animals such as serval, civet and genet may be seen on night drives. Birding enthusiasts will enjoy the regular sightings of pels fishing owl, African fish eagle, giant eagle owl and white backed vultures.

### Day 9: END OF ARRANGEMENTS MAUN AIRPORT

Travel time: Pom Pom – Maun Airport  
Approximately 30 minute light aircraft transfer

After breakfast and a morning activity (time permitting) you transfer by light aircraft flight to Maun for own onwards travel arrangements.

## Special Notes:

### Shared Transfers and Activities

Road, boat, air transfers and activities are quoted on a seat basis (on a shared basis and NOT private) unless otherwise requested or specified. Private charters/transfers can however be requested at an additional cost. Passengers may have various stops en-route to a destination adding to the duration of the transfer. International flight connections are accounted for in the daily schedules.

On shared transfers all the flight times are arranged a day before travel to avoid endless schedule changes. The transfer or charter company reserves the right to specify departure and arrival times.

### Weight and Luggage restrictions

Please advise upon requesting a quotation where a traveller **weighs over 100kg**, as well as at time of confirming the booking, as it may be necessary to cost in an additional seat on internal flights for the passenger's safety and comfort.

Luggage is restricted on flight transfers to **20kg per person in soft bags**, which includes all hand luggage and camera equipment. Please refer to your itinerary notes, as in some instances, and in some countries, such as Zambia and Zimbabwe this limitation is decreased to 15kg per person. Please note that luggage in excess of the above restrictions shall result in additional costs for transport and/or storage and should be arranged in advance. Note that laundry can be done on a daily basis at most camps and lodges.

### Health

Please confirm that all Clients are medically fit, in good physical and mental health and that there is nothing which renders him/her unfit to undertake the tour at the time of booking. Any Client with a pre-existing medical condition or illness must declare the true nature of such conditions to the Company before the commencement of the tour. The Client is responsible for attending to any medical condition which he/she may have and must consult with his/her physician in respect of all medical conditions which might be affected by his/her participation in the tour, activities or associated activities.

The Client accepts that certain areas included in the tour are malaria-infected areas and that he/she should take reasonable anti-malaria precautions.

### Insurance

Travel, cancellation and health insurance are highly recommended for all Clients.

### Visas/Passports/Travel Documents

The Client is solely responsible to ensure that his/her passports, visas, insurance cover and vaccination certificates, (and any other travel documents and/or requirements of any nature whatsoever) are valid for the duration of the tour and in the countries to be visited.

### Arrival and Departure Details

It is imperative that we have the correct International/Regional arrival and departure details for the clients in order to plan the itinerary and ensure efficient onward transfers. Costs may be incurred if these details are not given on quotation, or if they change subsequently.

## TERMS AND CONDITIONS

We require that you have read and understood our full **SAFARI INFORMATION** and **TERMS AND CONDITIONS** before confirming the itinerary and commencing the safari. However we would like to highlight the following important notes.

### EXCLUSION OF LIABILITY

In terms of the trading conditions, and any contract(s) concluded pursuant hereto, the Company acts as a booking agent only, for and on behalf of the Client in procuring services. The Company utilizes the products of various travel Subcontractors. The Company does not provide any direct services to the Clients as its services are limited to procuring and compiling tour packages for its clients.

While the Company makes every effort:

- to engage quality Subcontractors among the airlines, hotels, tour operators and other service providers to constitute the itinerary of the tour; and
- to ensure that the various services that constitutes the tour package will be carried out efficiently and as advertised;

it does not have direct control over the provision of services by Subcontractors and shall not be liable for *inter alia* any loss, damage, injury, additional costs, delay or irregularity that may be occasioned by an error or default, act or omission of any Subcontractor in carrying out the logistics of the tour package, or associated activities.

### Payment Terms

Bookings must be confirmed in writing by fax, email and/or registered letter and the deposit payment must be received before the Company can confirm in full to all subcontractors. Once the deposit is received and the booking is confirmed, all terms and conditions apply and our cancellation policies will be in immediate effect.

By confirmation of the booking, the Client acknowledges that all terms and conditions of the Company have been provided and accepted.

The full amount of the tour is payable not less than 60 days prior to the date when the tour commences.

In the event that a booking is not paid in full as per the above payment terms the Company reserves the right to refuse the Client(s) participation in the tour, and the client will be liable for any applicable cancellation fees.

### CANCELLATIONS

All cancellations should be made in writing and will only be deemed effective upon acknowledgment of receipt by the Company.

Cancellations will be subject to the following penalties:

- 20% of the total booking fee shall be payable immediately upon confirmation.
- 50% of the total booking 45 - 90 days prior to commencement of the tour.
- 100% of the total booking 44 days or less prior to the commencement of the tour.

Standard Cancellation fees shall apply in instances of postponed departure dates.

### RESERVATIONS

Please be advised that for any quotes, no provisional bookings have been made unless otherwise specified by your consultant. Accommodation is subject to availability at the time of the booking.

Costs quoted are subject to change at any time due to *inter alia* excessive exchange fluctuations, fuel costs, taxes, levies, government regulations, rate of exchange, and factors that are imposed upon us by our suppliers and government that are beyond our control.

Provisional bookings will be held for a period of 12 days (unless otherwise advised), where after confirmation of the booking and payment of a 20% non-refundable deposit will be required to secure the booking, failing which the booking will be cancelled.

Clients are to advise the Company at the time of requesting a quotation, and of making a booking, of the ages of all children (under the age of 21 and as at the time of travel) that will be participating in the tour, together with their date of birth, as not all lodges accept children, and there may be restrictions or conditions applicable. Some properties will require that children under the age of 18 share with an adult.

It is recommended that optional additional activities should be requested at the time of requesting a quotation and/or making the booking, specifically in Livingstone or Victoria Falls e.g. sunset cruise, to guarantee availability of such activities.



## **Safari Specialists** – Delta and Chobe Princess – Standard - 8 nights

All Clients should allow a minimum 2 - 3 hours connection time in Johannesburg for international flights. Please ask your consultant to check your flight details before booking.

With confirmation of the booking the Client accepts that the tour carries inherent risks, and that the Clients voluntarily assume all risks, which are associated with the tour. All Clients will be required to sign indemnities at the various camps/lodges/service providers, and abide by the Operators Code of Conduct in order to ensure their safety.

On confirmation of a booking, the Company requires personal information with respect to each and every Client e.g. Medical Conditions, Dietary requirements, Travel Insurance details and Emergency contact details. Please complete the Booking form on confirmation of a booking. By choosing not to complete and submit this information to the Company the Client will compromise the Company's response time in the event of an emergency.

With confirmation of the booking the Client confirms that he has read, understood and accepted the terms and conditions of the Company and its Subcontractors.